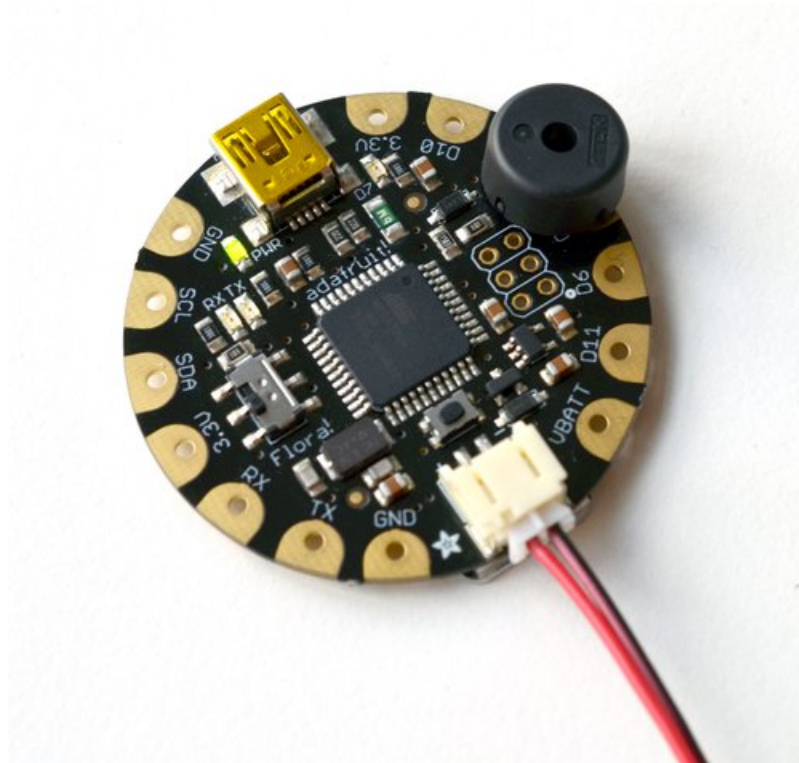


## Wearable Piezo Tones with Flora

Created by Becky Stern



Last updated on 2018-08-22 03:33:34 PM UTC

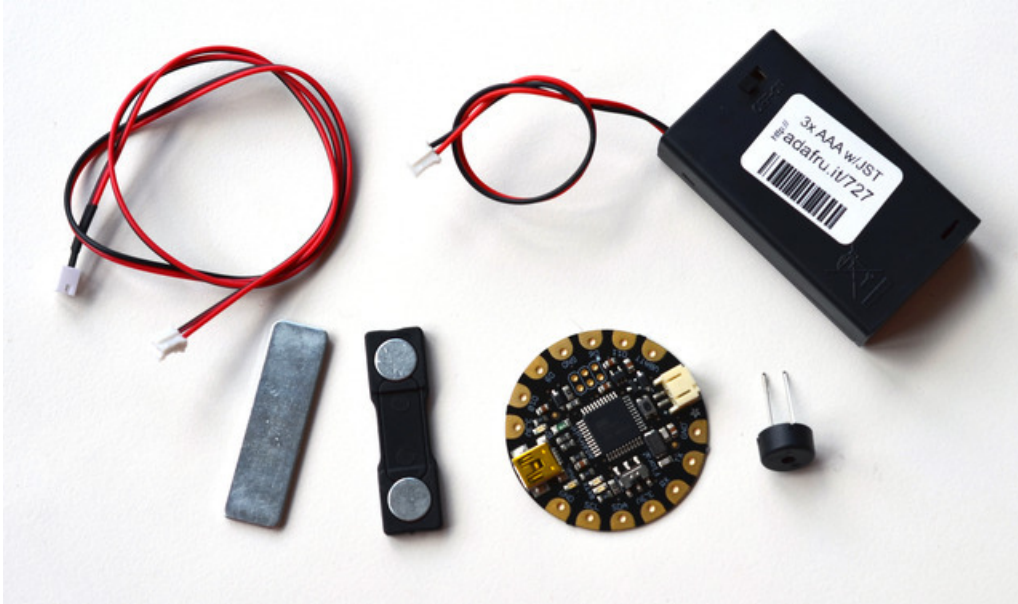
## Guide Contents

Guide Contents	2
Build it	3
Program it	6
Wear it!	8

## Build it

A piezo transducer can play a tone when supplied with a square wave signal. Using one of Flora's PWM pins, we can supply a square wave of varying frequency and duration to play melodies-- a wearable music machine!

You can also adapt this tutorial for Gemma, check out our singing hat tutorial: <https://learn.adafruit.com/close-encounters-hat/prepare-sensor-and-piezo-buzzer> (<https://adafru.it/Cc9>)



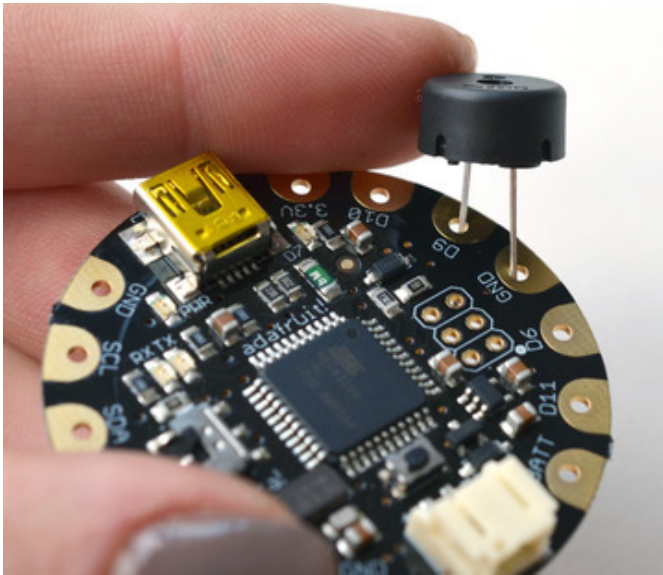
For this quick project you'll need:

- [Flora main board](http://adafru.it/659) (<http://adafru.it/659>)
- [Flora RGB Smart Neo Pixel](http://adafru.it/1060) (<http://adafru.it/1060>)
- [Battery holder](http://adafru.it/727) (<http://adafru.it/727>)
- [Piezo transducer](http://adafru.it/160) (<http://adafru.it/160>)
- [JST extension cable](http://adafru.it/1131) (<http://adafru.it/1131>)
- [Magnetic pin back](http://adafru.it/1170) (<http://adafru.it/1170>)

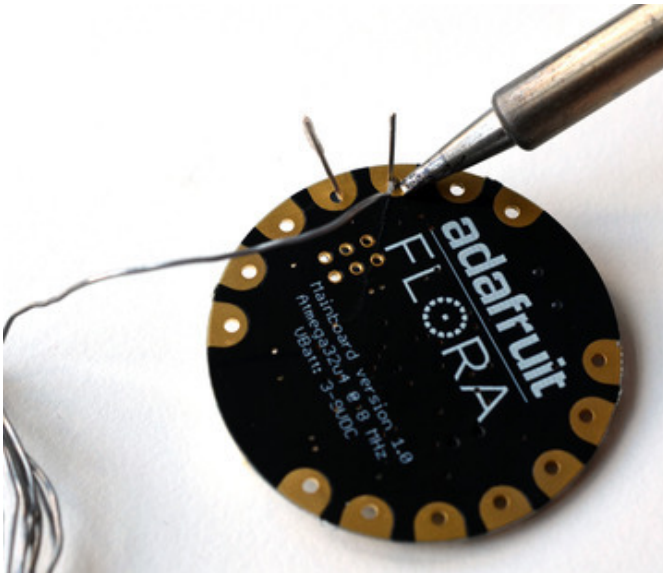
As for tools, you'll need a [USB cable](http://adafru.it/260) (<http://adafru.it/260>), [soldering iron](https://adafru.it/aTs) (<https://adafru.it/aTs>) and [flush diagonal cutters](http://adafru.it/152) (<http://adafru.it/152>).

Helpful tutorials:

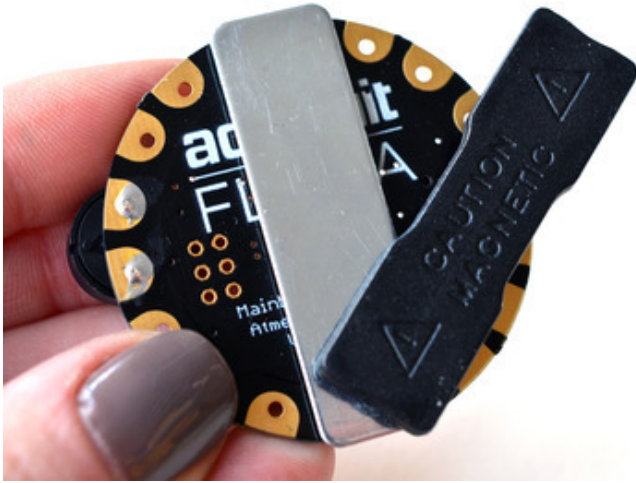
- [Learn how to solder](https://adafru.it/aTk) (<https://adafru.it/aTk>)
- [Getting Started with FLORA](https://adafru.it/aWE) (<https://adafru.it/aWE>)



Insert the legs of the piezo into holes marked D9 (or any PWM-capable pin) and GND on the Flora.



Solder the leads of the piezo and clip off the extra wire with flush snips.



Peel off the adhesive protection and affix the metal bar from the magnetic pin back to your Flora. Now you can easily affix it to your clothes! Use a JST extension cable to lengthen your battery pack's wires so you can tuck the power pack in your pocket.

## Program it

Program your Flora with the following code. It is a modified version of [Tiago Gala's code \(https://adafru.it/aWC\)](https://adafru.it/aWC) to play the Super Mario Bros theme on the piezo, hence some of the Portuguese variable names. It will play the theme once upon startup:

```
#define toneC    1911
#define toneC1  1804
#define toneD    1703
#define toneEb   1607
#define toneE    1517
#define toneF    1432
#define toneF1   1352
#define toneG    1276
#define toneAb   1204
#define toneA    1136
#define toneBb   1073
#define toneB    1012
#define tonec    955
#define tonec1   902
#define toned    851
#define toneeb   803
#define tonee    758
#define tonef    716
#define tonef1   676
#define toneg    638
#define toneab   602
#define tonea    568
#define tonebb   536
#define toneb    506

#define tonep    0

int speaker = 9;
long vel = 20000;
boolean hasplayed = false;

void setup() {
  pinMode(speaker, OUTPUT);
  delay(2000);
}

int melod[] = {tonec, toneG, toneE, toneA, toneB, toneBb, toneA, toneG, tonee, toneg, tonea, tonef, toneg};
int ritmo[] = {18, 18, 18, 12, 12, 6, 12, 8, 8, 8, 12, 6, 12, 12, 6, 6, 6};

void loop() {
  if (hasplayed == true){ return;}
  for (int i=0; i<17; i++) {
    int tom = melod[i];
    int tempo = ritmo[i];

    long tvalue = tempo * vel;

    tocar(tom, tvalue);

    delayMicroseconds(1000);
  }
  delay(1000);
}
```

```
    hasplayed = true;
  }

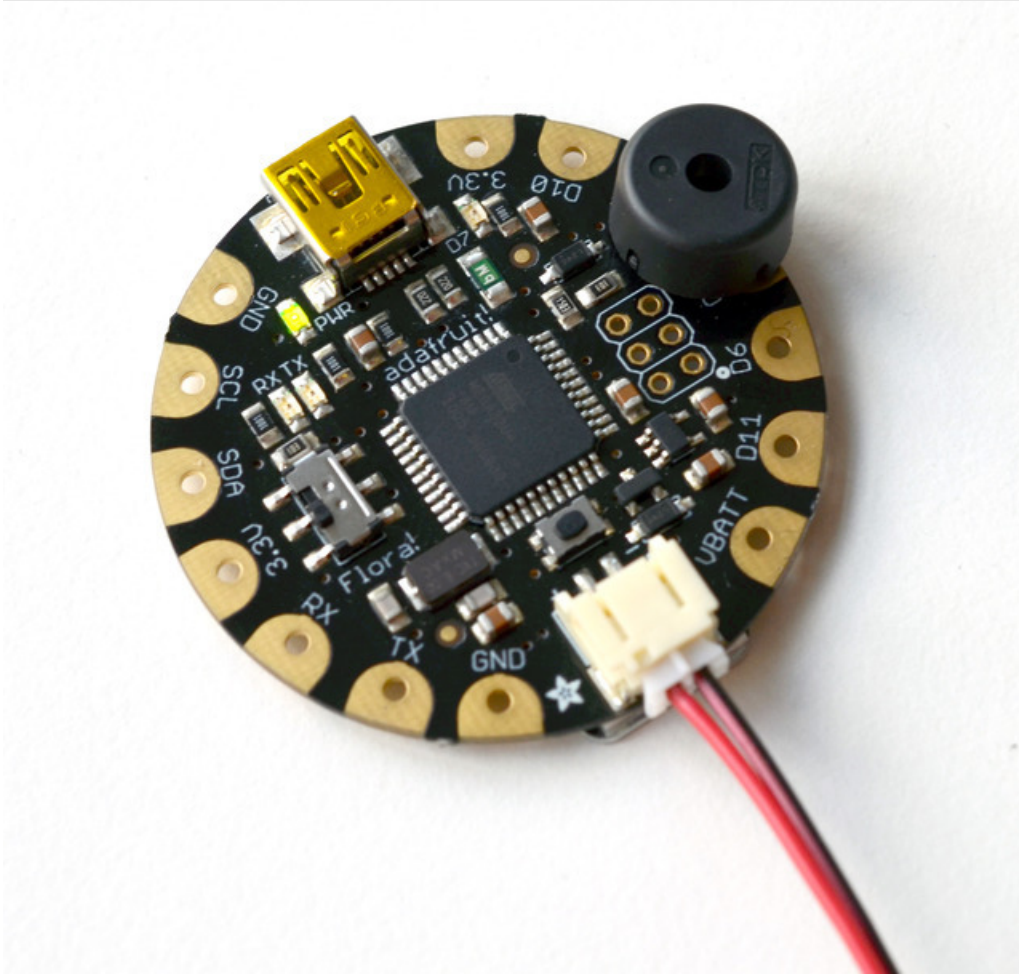
  void tocar(int tom, long tempo_value) {
    long tempo_gasto = 0;
    while (tempo_gasto < tempo_value) {
      digitalWrite(speaker, HIGH);
      delayMicroseconds(tom / 2);

      digitalWrite(speaker, LOW);
      delayMicroseconds(tom/2);
      tempo_gasto += tom;
    }
  }
}
```

For more examples/info on using a piezo to make melodies, check out the [Arduino Play Melody \(https://adafru.it/aWD\)](https://adafru.it/aWD) page.

Wear it!

---



Place the magnetic part of the pinback inside your garment and affix the Flora to it on the outside. Tuck the battery pack in your pocket and enjoy your melody-making accessory!