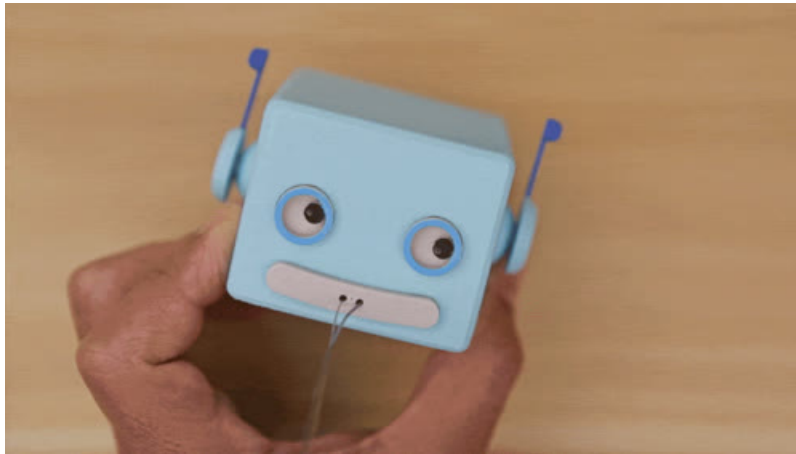




Solder Dispenser Adabot Head

Created by Ruiz Brothers

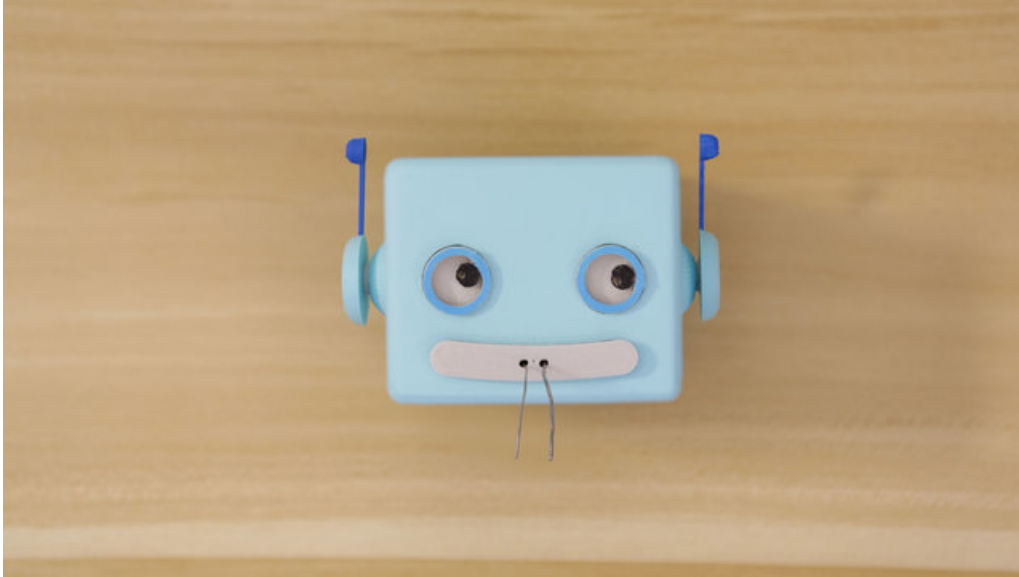


Last updated on 2018-08-22 03:58:19 PM UTC

Guide Contents

Guide Contents	2
Overview	3
Solder Dispenser	3
Parts	3
Solder Spool - 1/4 lb SAC305 RoHS lead-free / 0.031" rosin-core	4
Solder Wire - SAC305 RoHS Lead Free - 0.5mm/.02" diameter	4
Blue Masking Tape for 3D Printing Plates	4
Hakko Precision Flat Pliers	4
Filament for 3D Printers in Various Colors and Types	5
Flashforge Creator PRO	5
3D Printing	6
Slice Settings	6
3D Printing Enclosures	6
Supports	7
Edit Design	8
Assemble	9
Adding Face Features	9
Assemble Ears	10
Paint Details	11
Inserting Spools	11

Overview



Solder Dispenser

In this project, we'll design and 3D print a custom enclosure for storing and dispensing solder. This cute little enclosure looks like Adabot and can be used as a solder dispenser or tape dispenser. There's plenty of room in the enclosure to store two spools of solder or several rolls of small tape.

The spools can rotate independently, allowing you to have different solder spools sizes to quickly swap between different diameters.



Parts

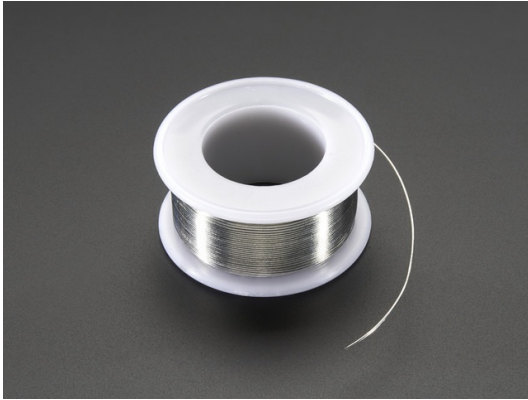
You only need a couple parts to complete this build:



Solder Spool - 1/4 lb SAC305 RoHS lead-free / 0.031" rosin-core

\$29.95
IN STOCK

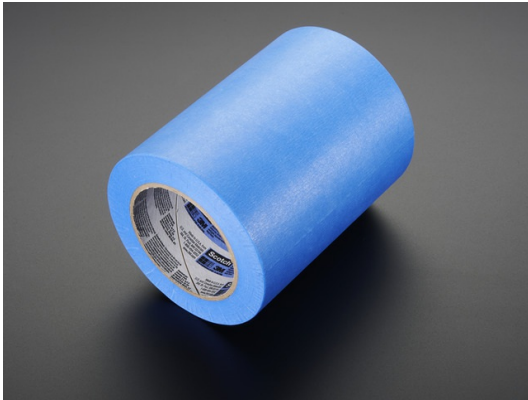
ADD TO CART



Solder Wire - SAC305 RoHS Lead Free - 0.5mm/.02" diameter

\$14.95
IN STOCK

ADD TO CART



Blue Masking Tape for 3D Printing Plates

\$49.95
IN STOCK

ADD TO CART



Hakko Precision Flat Pliers

\$11.95
IN STOCK

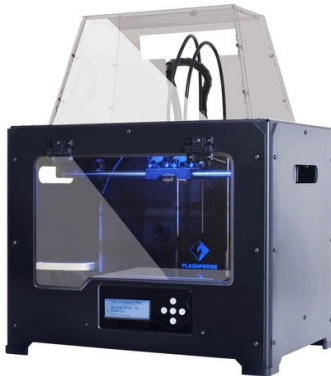
ADD TO CART



Filament for 3D Printers in Various Colors and Types

\$0.00
OUT OF STOCK

OUT OF STOCK

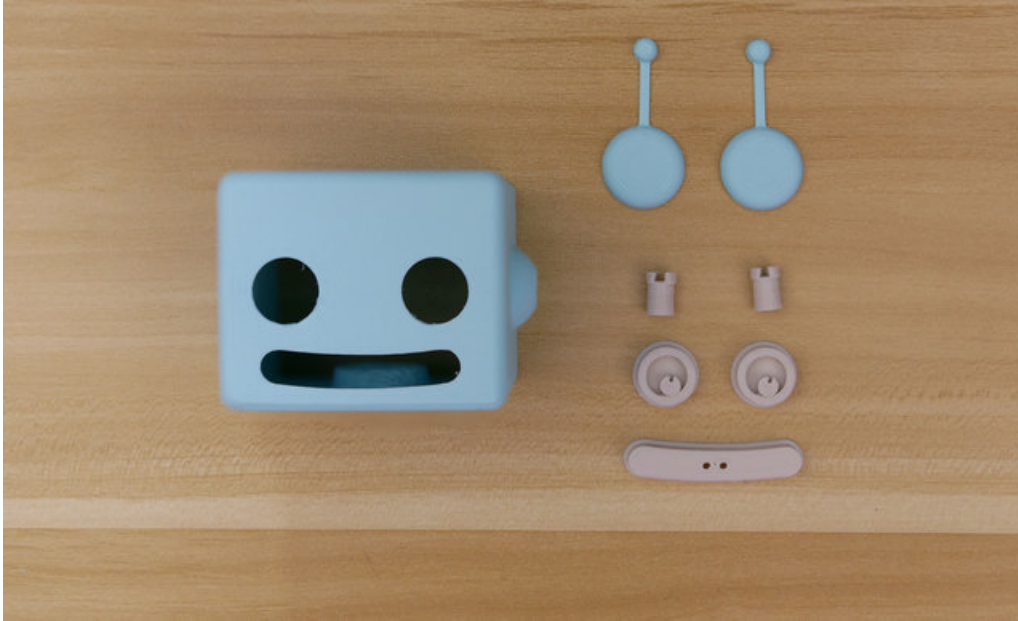


Flashforge Creator PRO

\$1,299.00
OUT OF STOCK

OUT OF STOCK

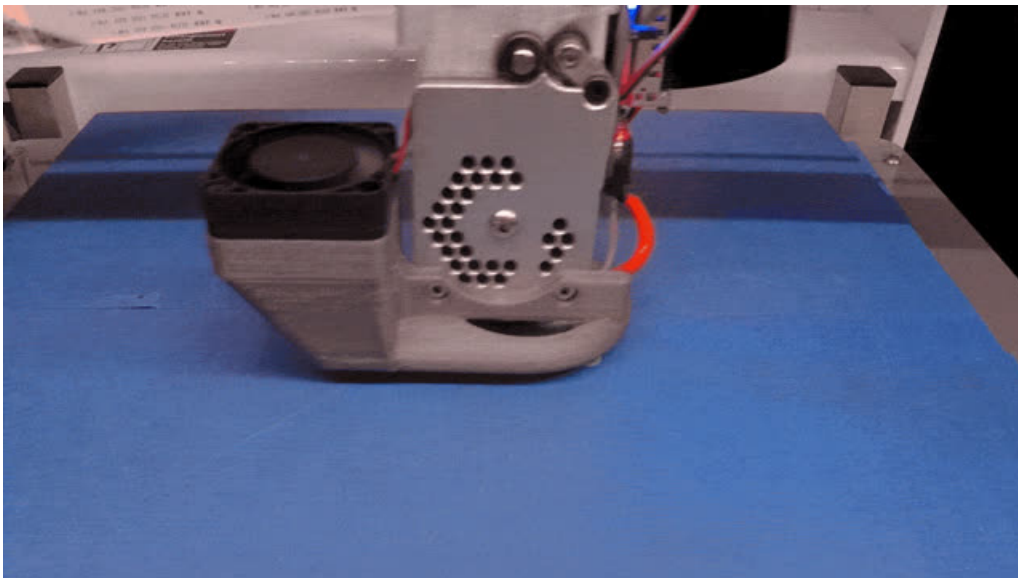
3D Printing



Slice Settings

Depending on your 3D printer, you may need to adjust the slice settings. We tested the enclosure on a Type A Machines and a DeltaPrintr GO. The mouth part will **require support** materials. The parts are oriented to print "as is".

- Nozzle: 0.4mm
- Extrusion Multiplier: 1.0
- Extrusion Width: 0.48mm
- Layer Height: 0.2mm
- Nozzle Temperature: 240c
- Print Speed: 60mm/s



3D Printing Enclosures

Edit Design

You can easily update the design for any additional features by editing the Fusion360 designs. The sketches are all listed in the timeline, so it's easy to adjust the size to each component.

<https://adafru.it/tAb>

<https://adafru.it/tAb>

<https://adafru.it/tAc>

<https://adafru.it/tAc>

Assemble



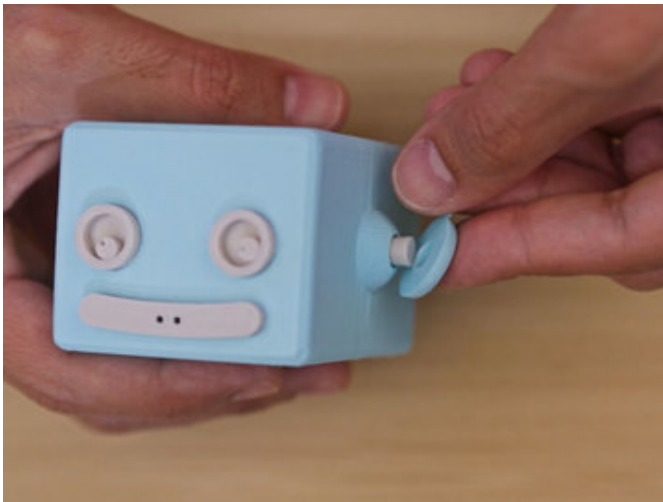
Adding Face Features

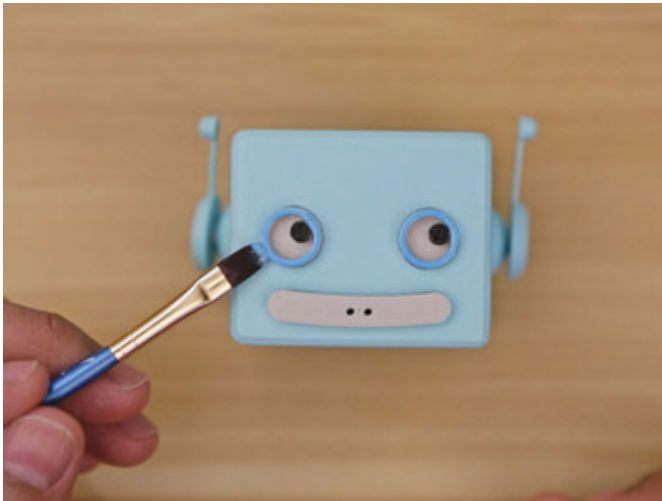
Align the eyes and mouth parts and then push them from the inside of the head. The tolerances will be tight, so you may need a bit of force to push them through.



Assemble Ears

The ears are connected with the small pins. Insert the pins at an angle and then push the ear parts into the grooves for each ear.

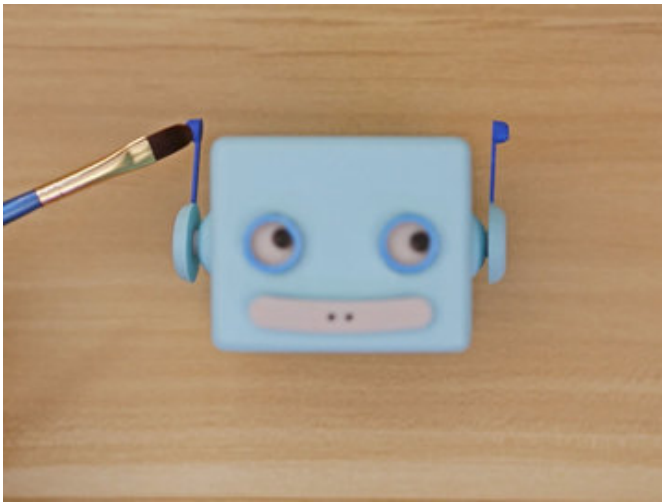




Paint Details

You can optionally paint in the colors for the outlines around the eyes and ear tips.

We used blue acrylic paint and let it dry for about half an hour.

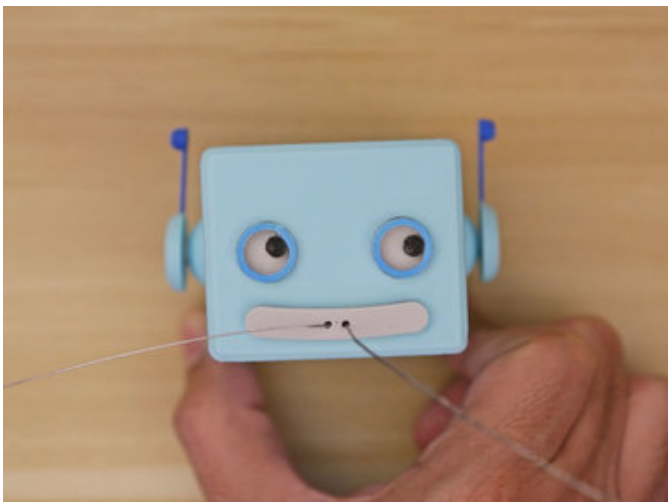


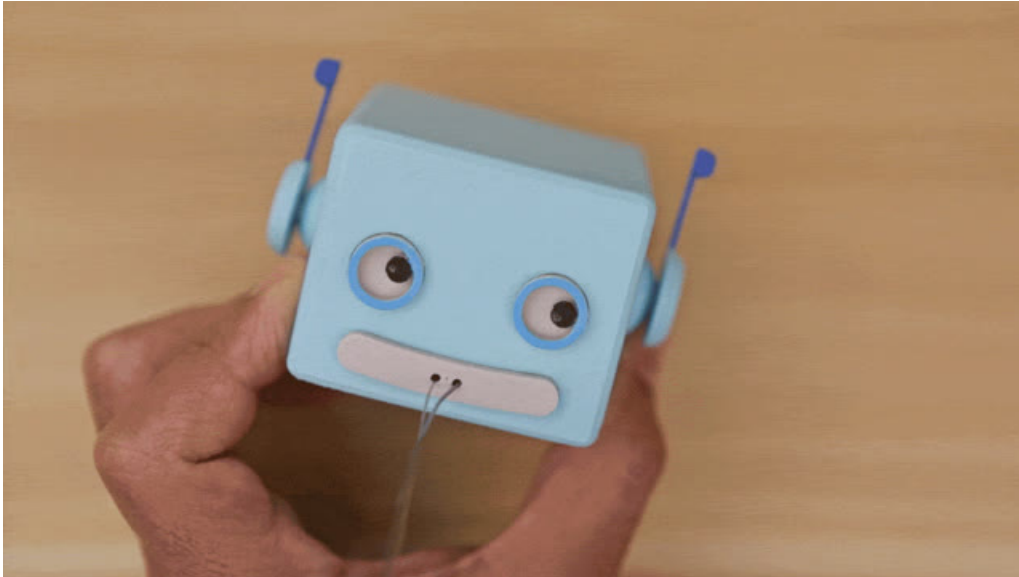
Inserting Spools

There are two built in spool holders on the top and bottom and two holes on both sides of the model. Use the top and bottom holders to mount spools of solder.

The two holes on the sides can be used to mount a roll of sticky tape.

To install spools, first thread solder through the holes on the mouth. Pull solder through the front side of the mouth and hold the ends while inserting the spool in place.





The spools can rotate independently, allowing you to have different solder spool sizes, allowing you to quickly swap between diameters.