



Narrative Clip Teardown

Created by Becky Stern



<https://learn.adafruit.com/narrative-clip-teardown>

Last updated on 2024-06-03 01:30:35 PM EDT

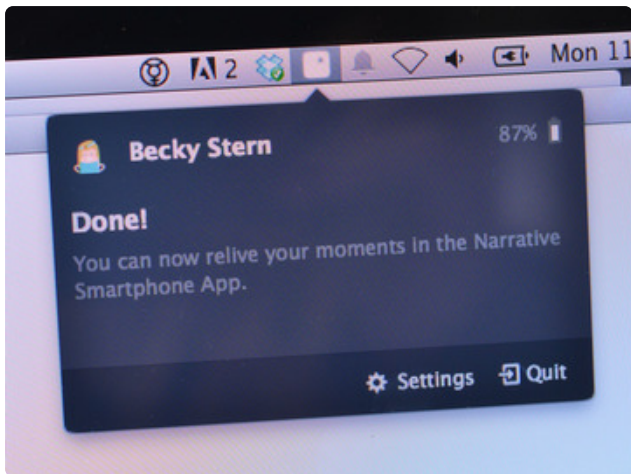
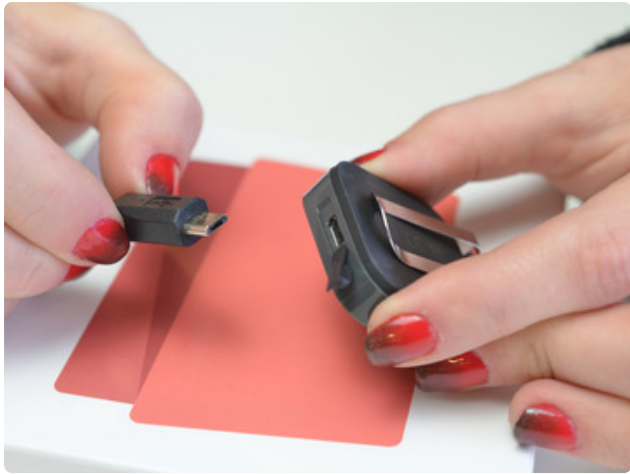
Table of Contents

Inside the Narrative Clip	3
---------------------------	---

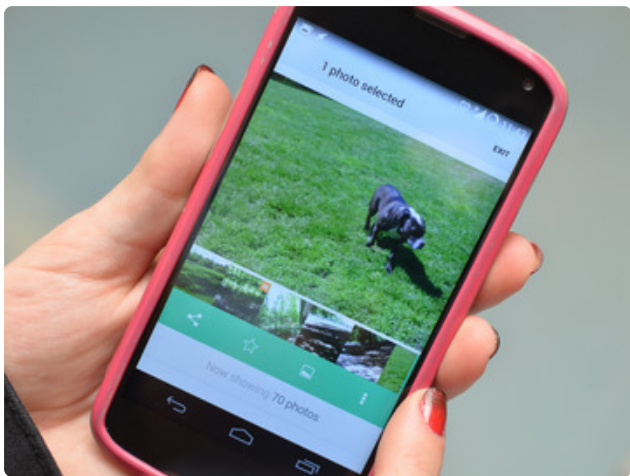
Inside the Narrative Clip



The [Narrative Clip \(https://adafru.it/dtw\)](https://adafru.it/dtw) is an automatic lifelogging camera you clip to your shirt, bag, or anything else.



Plug the device into your computer to charge it up and upload the photos to the Narrative service, which then delivers the photos to the Narrative app (iOS/Android).





What's inside this charming little square? We took apart the Narrative Clip to see what drives its camera and senses the world around it.



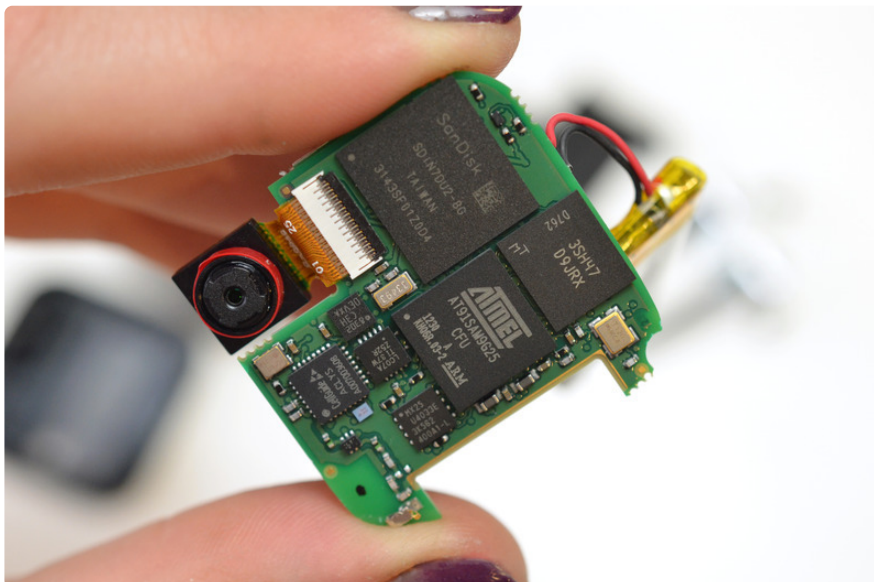
On the back of the clip, the black plastic is held securely in place by the metal clip. However it can be pried loose with the edge of a utility knife and delicately twisted away from the main body to reveal the 125mAh lipoly battery.



The metal clip is secured by two small hex screws.



After removing the metal clip, the flexible gasket and circuit board can be delicately removed from the front plastic enclosure, inside of which lives the GPS antenna.



We identified several of the chips on the board:

- Atmel [AT91SAM9G25 Arm processor](https://adafru.it/dtx) (<https://adafru.it/dtx>)
- SanDisk [SDIN7DU2-8G Flash card](https://adafru.it/dty) (<https://adafru.it/dty>)
- Linear [LTC3557 USB Power Manager with Li-Ion Charger and Three Step-Down Regulators](https://adafru.it/dtz) (<https://adafru.it/dtz>)
- ST [LIS3DH 3-axis accelerometer](https://adafru.it/dtA) (<https://adafru.it/dtA>)
- CellGuide [ACLYS GPS module](https://adafru.it/dtB) (<https://adafru.it/dtB>)
- TI [LC07A hex level shifter](https://adafru.it/dtC) (<https://adafru.it/dtC>)
- MT [256Mb Memory \(MT48H16M16LFBF-75\)](https://adafru.it/eIT) (<https://adafru.it/eIT>)

