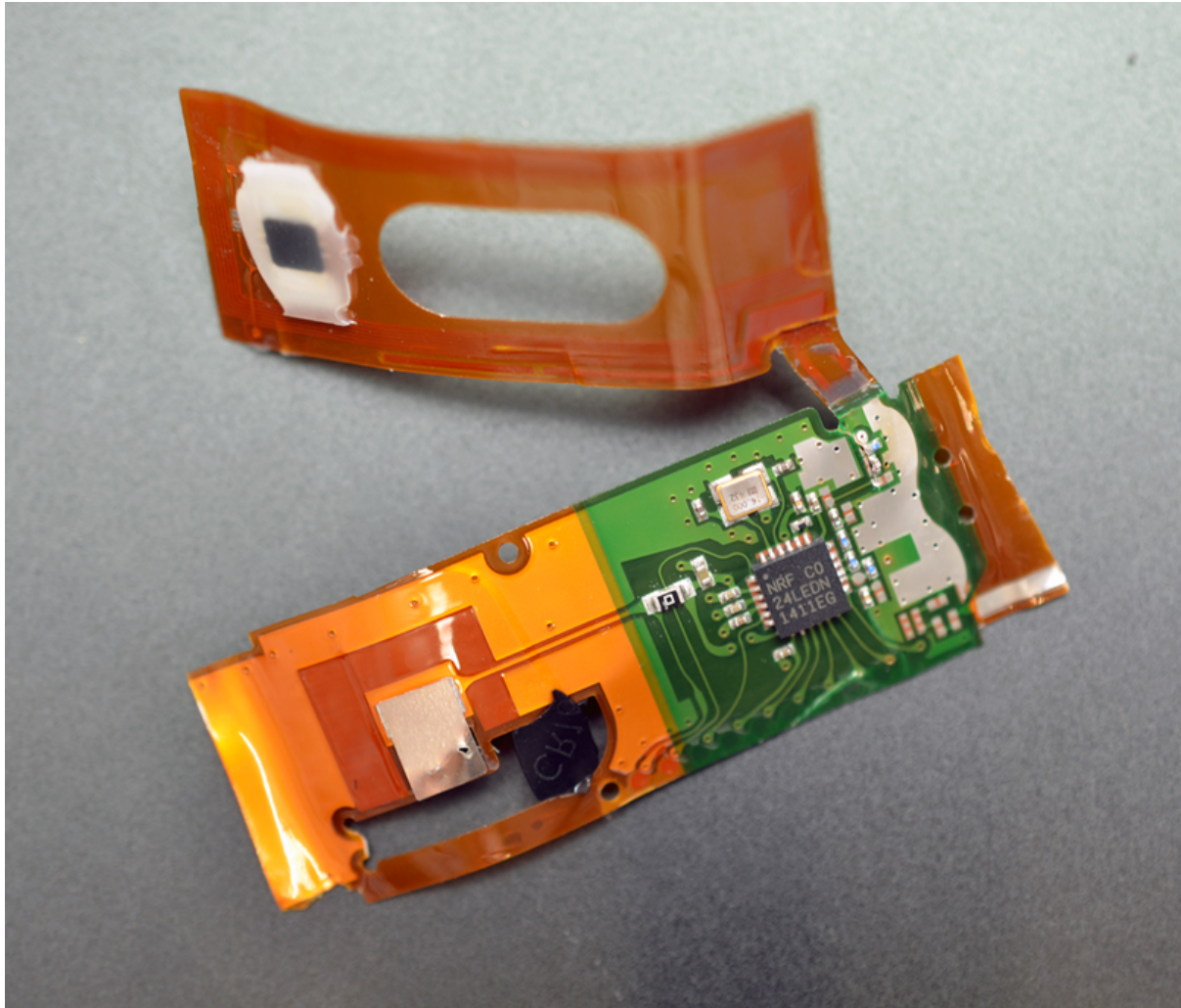




Magic Band Teardown

Created by Becky Stern



<https://learn.adafruit.com/magic-band-teardown>

Last updated on 2024-06-03 01:48:53 PM EDT

Table of Contents

Inside Magic Band

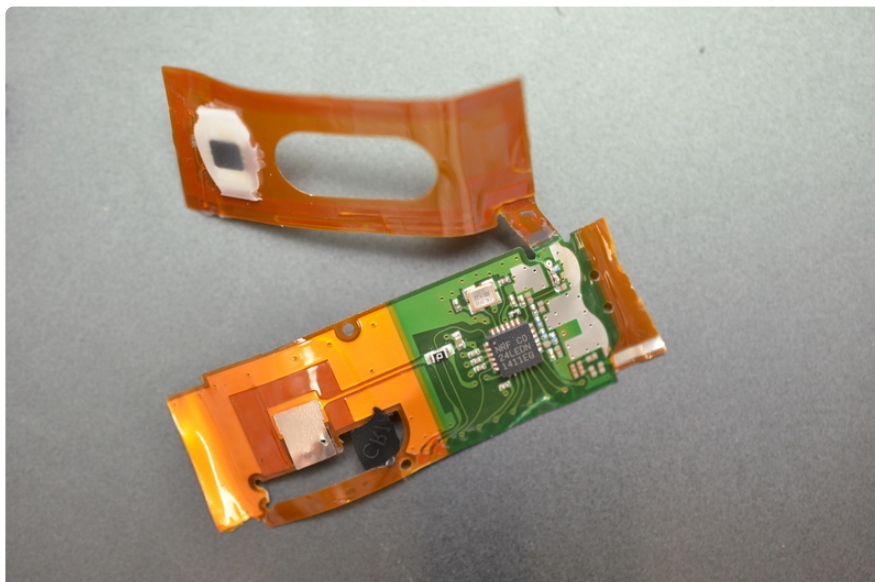
3

Inside Magic Band

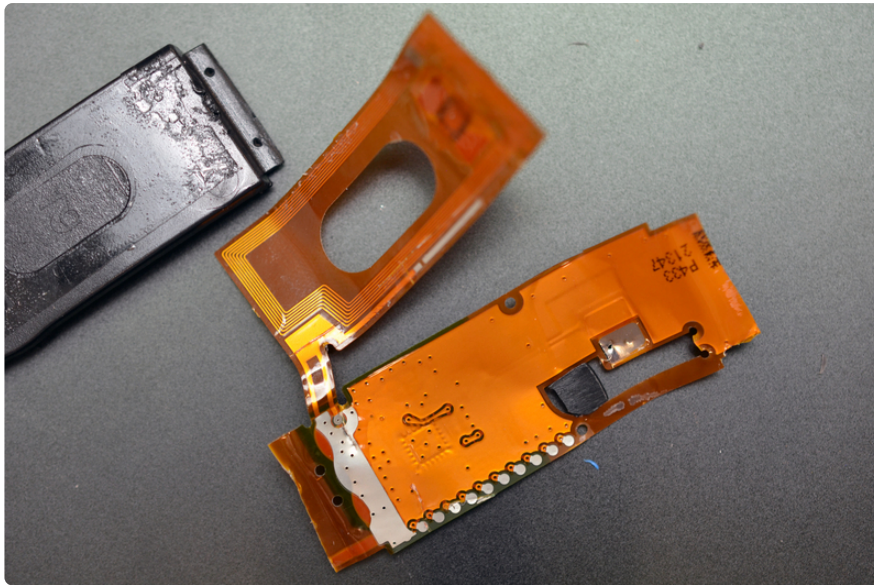
The [Disney Magic Band](https://adafru.it/jcr) (<https://adafru.it/jcr>) is a wireless bracelet used for entry and more at Disney Parks.



It is molded together so firmly, it was difficult to take apart and many parts of the flex circuit were torn, including the antenna that stretches almost the entire length of the bracelet.



The board only has one main chip, and it's a Nordic NRF24LE1 combo RF transceiver and microcontroller (a commenter on [EE Times' teardown](https://adafru.it/jcs) (<https://adafru.it/jcs>) identifies the "DN" to represent the custom run for Disney).



Powered by a nonrechargeable coin cell, the Magic Band eventually stops working, but that just means they'll issue you another one for your next Disney park visit.

