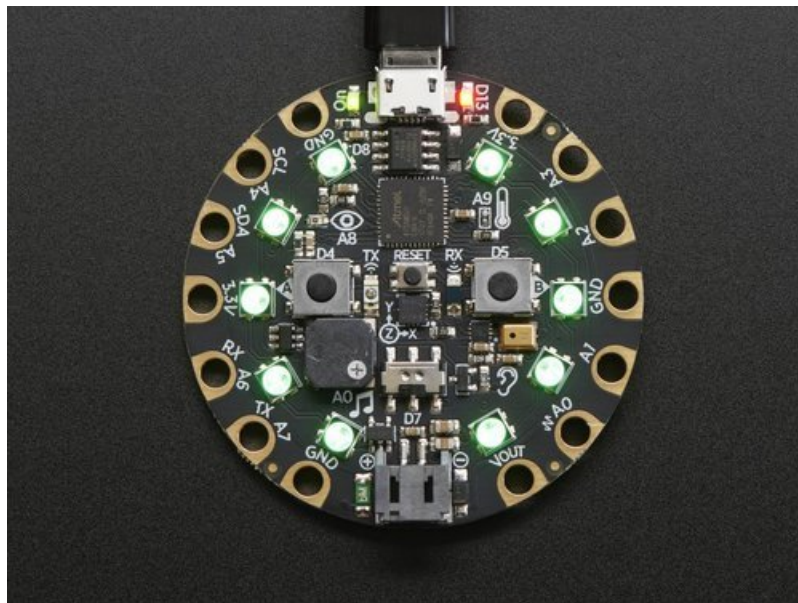




Adafruit Circuit Playground Express

Created by lady ada



Last updated on 2021-01-23 07:36:39 PM EST

Guide Contents

Guide Contents	2
Overview	9
Classic vs. Express	12
How to tell if you have a Classic	12
How to tell if you have an Express	12
Guided Tour	14
Power and Data	14
Micro B USB connector	14
JST Battery Input	15
Alligator/Croc Clip Pads	15
Microchips	15
LEDs	16
Green ON LED	16
Red #13 LED	16
10 x Color NeoPixel LED	17
Speaker	17
Sensors	17
Light Sensor	18
Temperature Sensor	18
Microphone Audio Sensor	18
Motion Sensor	19
Capacitive Touch	19
Switches & Buttons	19
Infrared Receive/Transmit & Proximity	20
Pinouts	22
Power Pads	22
Input/Output Pads	23
Common to all pads	23
Each Pin!	24
Internally Used Pins!	24
Update the Bootloader (Mac Users Especially!)	26
Updating Your Circuit Playground Express Bootloader (see below for other boards)	26
Oh no, I updated MacOS already and I can't see CPLAYBOOT!	28
Upgrading Other Boards	28
Windows Driver Installation	29
Manual Driver Installation	31
Code.org CSD	32
Step 1. Connect to USB	32
Step 2. Press RESET to get into bootloader mode	32
Step 3. Copy over Firmata firmware	32
MakeCode	34
What is MakeCode?	35
Editing Blocks	38
Blinky!	38
Downloading and Flashing	40
Step 1: Bootloader mode	40

Step 2: Compile and Download	41
Running MakeCode that's Already Loaded	42
Saving and Sharing	44
Extracting your code from the Circuit Playground	44
Sharing	44
Editing JavaScript	45
Apps	46
Windows Store	46
Node.JS	46
Other Good Stuff	47
GitHub packages	47
We are Open Source on GitHub	47
We have crowd-sourced translations	47
MakeCode and Windows 10	48
The MakeCode App for Windows 10	48
Installation	48
See More MakeCode Projects	50
What is CircuitPython?	51
CircuitPython is based on Python	51
Why would I use CircuitPython?	51
CircuitPython	53
Install or update CircuitPython!	53
Further Information	55
Installing Mu Editor	56
Download and Install Mu	56
Using Mu	56
Creating and Editing Code	58
Creating Code	58
Editing Code	60
Your code changes are run as soon as the file is done saving.	60
1. Use an editor that writes out the file completely when you save it.	61
2. Eject or Sync the Drive After Writing	61
Oh No I Did Something Wrong and Now The CIRCUITPY Drive Doesn't Show Up!!!	62
Back to Editing Code...	62
Exploring Your First CircuitPython Program	62
Imports & Libraries	62
Setting Up The LED	63
Loop-de-loops	63
What if I don't have the loop?	63
More Changes	64
Naming Your Program File	64
Connecting to the Serial Console	65
Are you using Mu?	65
Setting Permissions on Linux	66
Using Something Else?	66
Interacting with the Serial Console	67
The REPL	70
Returning to the serial console	73
CircuitPython Libraries	74
Installing the CircuitPython Library Bundle	75

Example Files	76
Copying Libraries to Your Board	76
Example: ImportError Due to Missing Library	76
Library Install on Non-Express Boards	78
Updating CircuitPython Libraries/Examples	78
Frequently Asked Questions	79
I have to continue using CircuitPython 3.x or 2.x, where can I find compatible libraries?	79
Is ESP8266 or ESP32 supported in CircuitPython? Why not?	79
How do I connect to the Internet with CircuitPython?	79
Is there asyncio support in CircuitPython	79
My RGB NeoPixel/DotStar LED is blinking funny colors - what does it mean?	79
What is a MemoryError?	79
What do I do when I encounter a MemoryError?	80
Can the order of my import statements affect memory?	80
How can I create my own .mpy files?	80
How do I check how much memory I have free?	80
Does CircuitPython support interrupts?	80
Does Feather M0 support WINC1500?	80
Can AVRs such as ATmega328 or ATmega2560 run CircuitPython?	80
Commonly Used Acronyms	80
Troubleshooting	82
Always Run the Latest Version of CircuitPython and Libraries	82
I have to continue using CircuitPython 3.x or 2.x, where can I find compatible libraries?	82
CPLAYBOOT, TRINKETBOOT, FEATHERBOOT, or GEMMABOOT Drive Not Present	82
You may have a different board.	82
MakeCode	82
Windows 10	82
Windows 7	83
MacOS	83
Windows Explorer Locks Up When Accessing boardnameBOOT Drive	84
Copying UF2 to boardnameBOOT Drive Hangs at 0% Copied	84
CIRCUITPY Drive Does Not Appear	84
Serial Console in Mu Not Displaying Anything	84
CircuitPython RGB Status Light	85
ValueError: Incompatible .mpy file.	86
CIRCUITPY Drive Issues	86
Easiest Way: Use storage.erase_filesystem()	86
Old Way: For the Circuit Playground Express, Feather M0 Express, and Metro M0 Express:	87
Old Way: For Non-Express Boards with a UF2 bootloader (Gemma M0, Trinket M0):	88
Old Way: For non-Express Boards without a UF2 bootloader (Feather M0 Basic Proto, Feather Adalogger, Arduino Zero):	88
Running Out of File Space on Non-Express Boards	88
Delete something!	88
Use tabs	89
MacOS loves to add extra files.	89
Prevent & Remove MacOS Hidden Files	89
Copy Files on MacOS Without Creating Hidden Files	90
Other MacOS Space-Saving Tips	90
Device locked up or boot looping	91
Uninstalling CircuitPython	93
Backup Your Code	93
Moving Circuit Playground Express to MakeCode	93

Moving to Arduino	94
Welcome to the Community!	96
Adafruit Discord	96
Adafruit Forums	97
Adafruit Github	98
ReadTheDocs	99
CircuitPython Made Easy	100
CircuitPython Playground	101
CircuitPython Built-Ins	102
Thing That Are Built In and Work	102
Flow Control	102
Math	102
Tuples, Lists, Arrays, and Dictionaries	102
Classes, Objects and Functions	102
Lambdas	102
Random Numbers	102
CircuitPython Digital In & Out	103
Going Beyond the Lesson!	104
Experiment 1	104
Experiment 2	104
CircuitPython Analog In	106
Creating an Analog Input	107
GetVoltage Helper	107
Main Loop	107
CircuitPython Analog Out	109
Creating an analog output	109
Setting the analog output	109
Main Loop	109
Find the pin	110
CircuitPython PWM	114
PWM with Fixed Frequency	114
Create a PWM Output	115
Main Loop	115
PWM Output with Variable Frequency	115
Wire it up	116
Where's My PWM?	121
CircuitPython Servo	122
Servo Wiring	122
Standard Servo Code	124
Continuous Servo Code	124
CircuitPython Audio Out	126
Basic Tones	126
Playing Audio Files	128
CircuitPython Cap Touch	131
Creating an capacitive touch input	132
Main Loop	132
Capacitive Touch and the Audio Pin on Circuit Playground Bluefruit	136
CircuitPython NeoPixel	137
CircuitPython DotStar	141
Wire It Up	141
The Code	142
Create the LED	144

DotStar Helpers	145
Main Loop	145
Is it SPI?	145
Read the Docs	146
CircuitPython UART Serial	147
The Code	147
Wire It Up	148
Where's my UART?	151
Trinket M0: Create UART before I2C	152
CircuitPython I2C	154
Wire It Up	154
Find Your Sensor	157
I2C Sensor Data	158
Where's my I2C?	159
CircuitPython HID Keyboard	161
CircuitPython HID Keyboard and Mouse	164
CircuitPython Keyboard Emulator	164
Create the Objects and Variables	165
The Main Loop	166
CircuitPython Mouse Emulator	166
Create the Objects and Variables	168
CircuitPython HID Mouse Helpers	168
Main Loop	168
CircuitPython CPU Temp	170
CircuitPython Storage	171
Logging the Temperature	172
CircuitPython Expectations	175
Always Run the Latest Version of CircuitPython and Libraries	175
I have to continue using CircuitPython 3.x or 2.x, where can I find compatible libraries?	175
Switching Between CircuitPython and Arduino	175
The Difference Between Express And Non-Express Boards	175
Non-Express Boards: Gemma, Trinket, and QT Py	176
Small Disk Space	176
No Audio or NVM	176
Differences Between CircuitPython and MicroPython	176
Differences Between CircuitPython and Python	176
Python Libraries	176
Integers in CircuitPython	176
Floating Point Numbers and Digits of Precision for Floats in CircuitPython	177
Differences between MicroPython and Python	177
Playground Light Sensor	178
Playground Temperature	180
Playground Drum Machine	182
Playground Sound Meter	186
Arduino	189
Set Up Arduino IDE	190
Install SAMD Support	190
Install Drivers (Windows 7 Only)	191
Blink	191
Sucessful Upload	192

Compilation Issues	192
Manually bootloading	192
Ubuntu & Linux Issue Fix	193
Arduino Switches	194
Without Library Assist	194
Adapting Sketches to M0 & M4	196
Analog References	196
Pin Outputs & Pullups	196
Serial vs SerialUSB	196
AnalogWrite / PWM on Feather/Metro M0	197
analogWrite() PWM range	198
analogWrite() DAC on A0	198
Missing header files	198
Bootloader Launching	198
Aligned Memory Access	198
Floating Point Conversion	199
How Much RAM Available?	199
Storing data in FLASH	199
Pretty-Printing out registers	199
M4 Performance Options	200
CPU Speed (overclocking)	200
Optimize	200
Cache	201
Max SPI and Max QSPI	201
Enabling the Buck Converter on some M4 Boards	201
Troubleshooting	202
Using external NeoPixel strips/dots with Circuit Playground in Arduino	202
CPLAYBOOT Does not Appear on Windows 10; "ARM7TDMI" Error in Arduino	202
Accessories	204
Packs	204
Connections	205
Capacitive Touch	208
Robotics	214
Sewable	215
Power	218
UF2 Bootloader Details	227
Entering Bootloader Mode	228
Using the Mass Storage Bootloader	230
Using the BOSSA Bootloader	231
Windows 7 Drivers	231
Verifying Serial Port in Device Manager	231
Running bossac on the command line	233
Using bossac Versions 1.7.0, 1.8	233
Using bossac Versions 1.9 or Later	233
Updating the bootloader	234
Getting Rid of Windows Pop-ups	235
Making your own UF2	236
Installing the bootloader on a fresh/bricked board	236

Downloads	237
Files:	237
Circuit Playground Express Schematic	237

