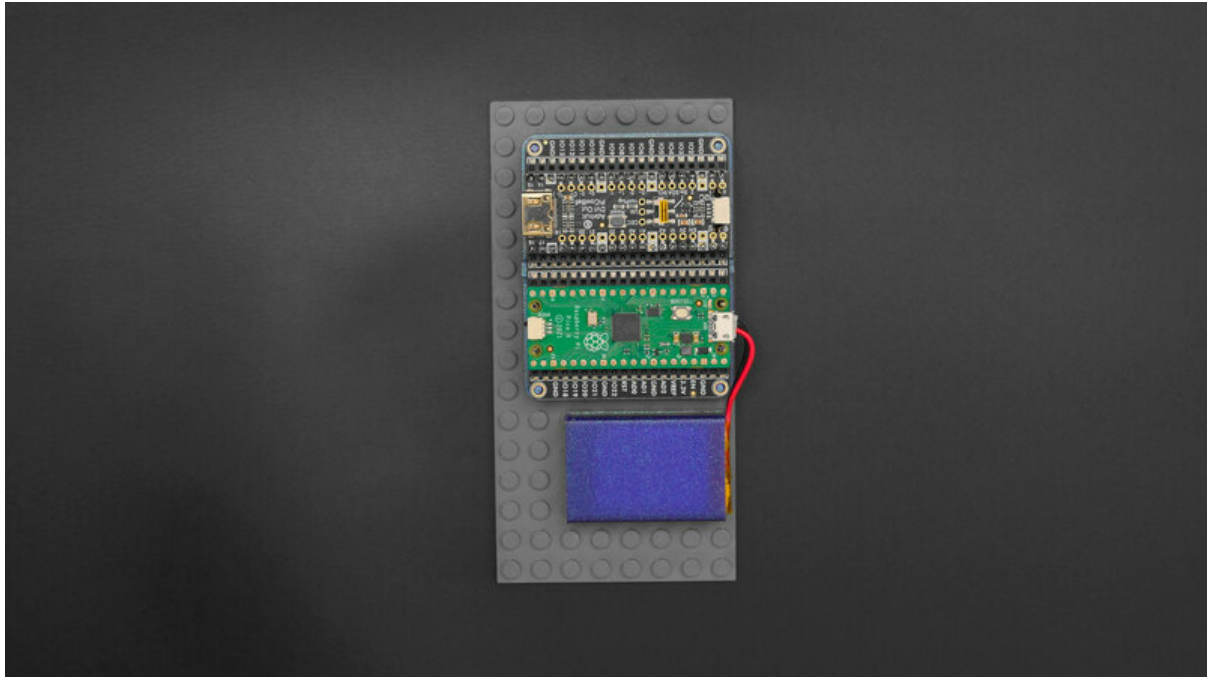




# PiCowBell Proto Brick Plates

Created by Ruiz Brothers



<https://learn.adafruit.com/PiCowBell-Doubler-Brick-Plates>

Last updated on 2024-06-03 03:59:39 PM EDT

# Table of Contents

Overview	3
<hr/>	
• LEGO Compatible Plate	
• Parts	
3D Printing	6
<hr/>	
• 3D Printed Parts	
• Slice with Settings for PLA material	
• Adhere parts	

---

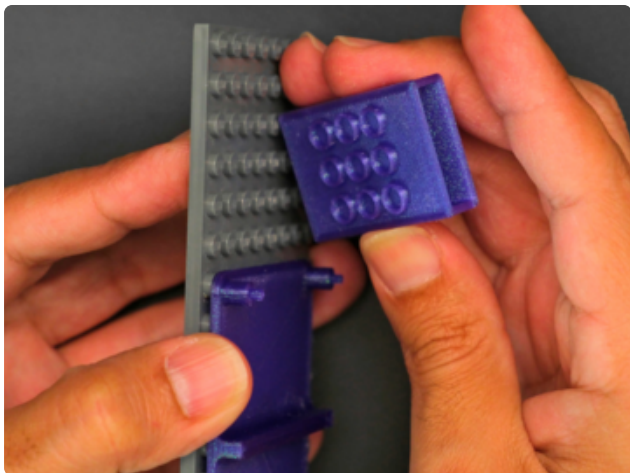
# Overview



You can develop Raspberry Pi Pico W projects with Adafruit's PiCowBell Proto Boards.

The PiCowBell Doubler features a STEMMA QT I2C port, a reset button, socket headers and Lipo battery charging.

It's also got an on/off switch, extra ground and voltage pins and optional support for alkaline batteries if you don't want Lipo rechargeables.

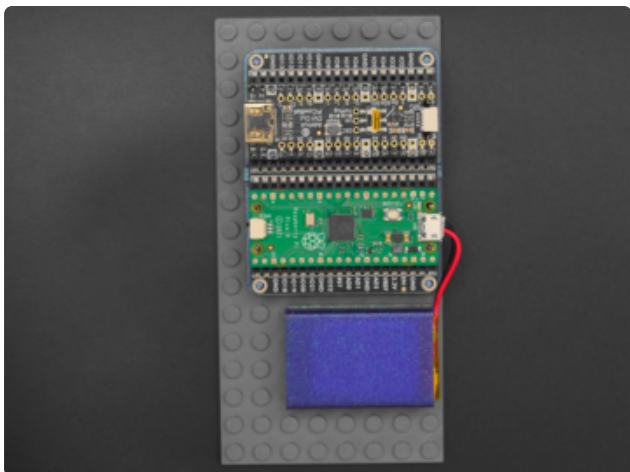


## LEGO Compatible Plate

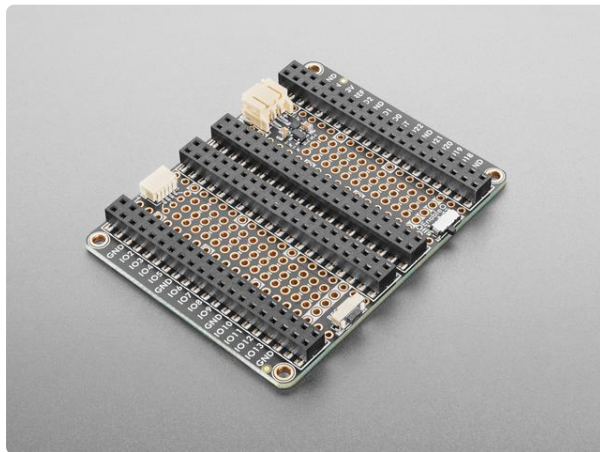
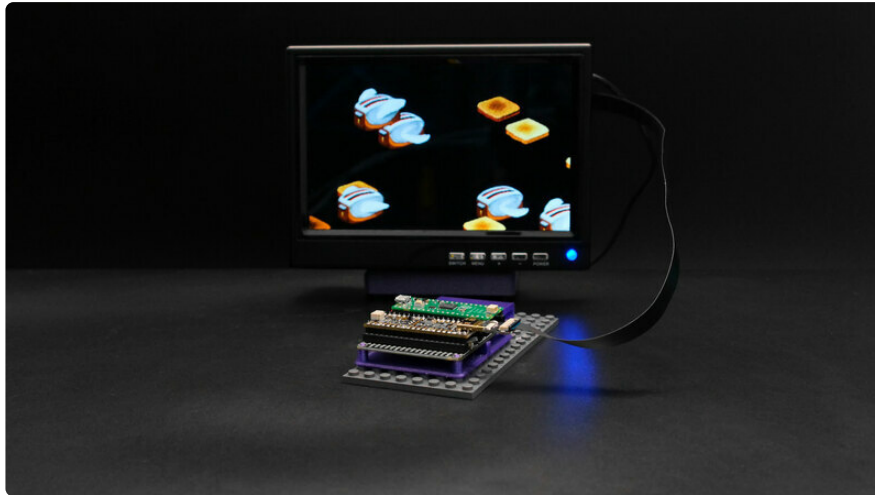
We designed and 3D printed LEGO compatible mounting plates for prototyping your projects with bricks and plates.

Just snap the proto board onto the built-in standoffs and slide a LiPo battery into the protective sleeve to get started.

We think it's a nice and easy way to add extra boards like the PiCowBell DVI board for outputting to an HDMI display.



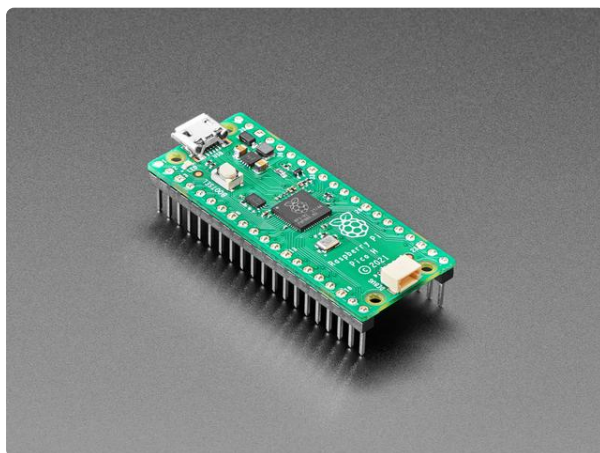
## Parts



### [Adafruit Proto Doubler PiCowbell for Pico and PicoW](https://www.adafruit.com/product/5906)

The Adafruit Proto Doubler PiCowBell is intended to be treated like a mini solderless proto plate to simplify programming and sensor connectivity for your...

<https://www.adafruit.com/product/5906>



### [Raspberry Pi Pico H - Pico with Headers Soldered](https://www.adafruit.com/product/5525)

The Raspberry Pi foundation changed single-board computing when they released the Raspberry Pi computer, now they're...

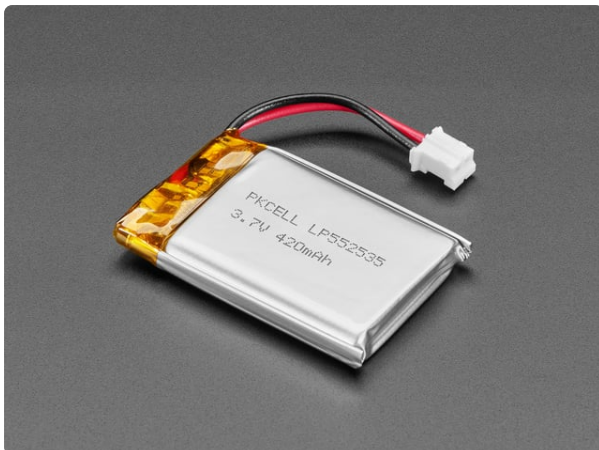
<https://www.adafruit.com/product/5525>



### Adafruit PiCowbell DVI Output for Pico - Works with HDMI Display

Ding dong! Hear that? It's the PiCowbell ringing, letting you know that the new Adafruit PiCowbell DVI Output for Pico is in stock and ready...

<https://www.adafruit.com/product/5745>



### Lithium Ion Polymer Battery with Short Cable - 3.7V 420mAh

Lithium-ion polymer (also known as 'lipo' or 'lipoly') batteries are thin, light, and powerful. The output ranges from 4.2V when completely charged to 3.7V. This...

<https://www.adafruit.com/product/4236>



### DIY HDMI Cable Parts - Straight Mini HDMI Plug Adapter

If you love DIY cable-rigging, then these HDMI adapters are right up your alley! Making custom HDMI cables has never been easier. Just grab one of our

<https://www.adafruit.com/product/3552>



### DIY USB or HDMI Cable Parts - 30 cm Ribbon Cable

If you're looking to make a custom cable with any two of our USB or HDMI adapters, then you'll need to have these flex cables handy! Making custom cables has never been...

<https://www.adafruit.com/product/3562>



Optional

LEGO-compatible plates and bricks to attach your project.

---

## 3D Printing



### 3D Printed Parts

STL files for 3D printing are oriented to print "as-is" on FDM style machines.

Parts are designed to 3D print without any support material using PLA filament.

Original design source files may be downloaded using the links above.

Edit Design

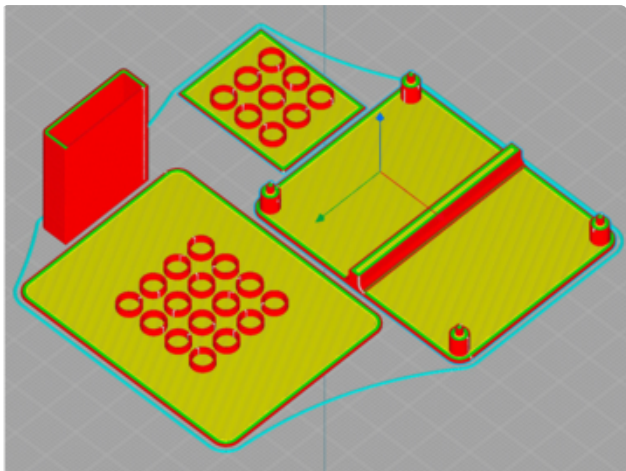
<https://adafru.it/19JA>

420mAh battery

<https://adafru.it/19JC>

500Mah battery

<https://adafru.it/19JD>



### Slice with Settings for PLA material

The parts were sliced using CURA using the slice settings below.

PLA filament 200c extruder

0.2 layer height

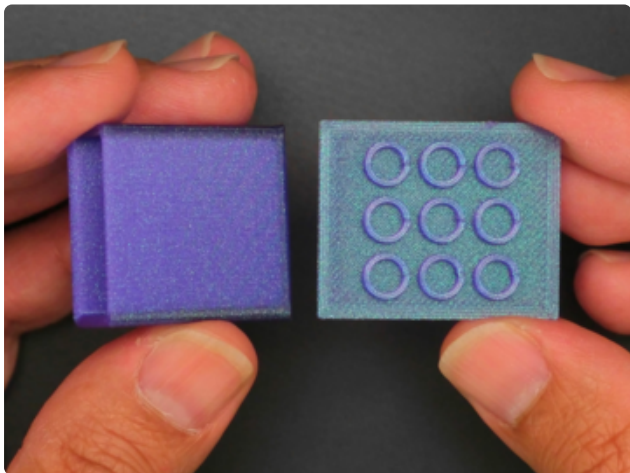
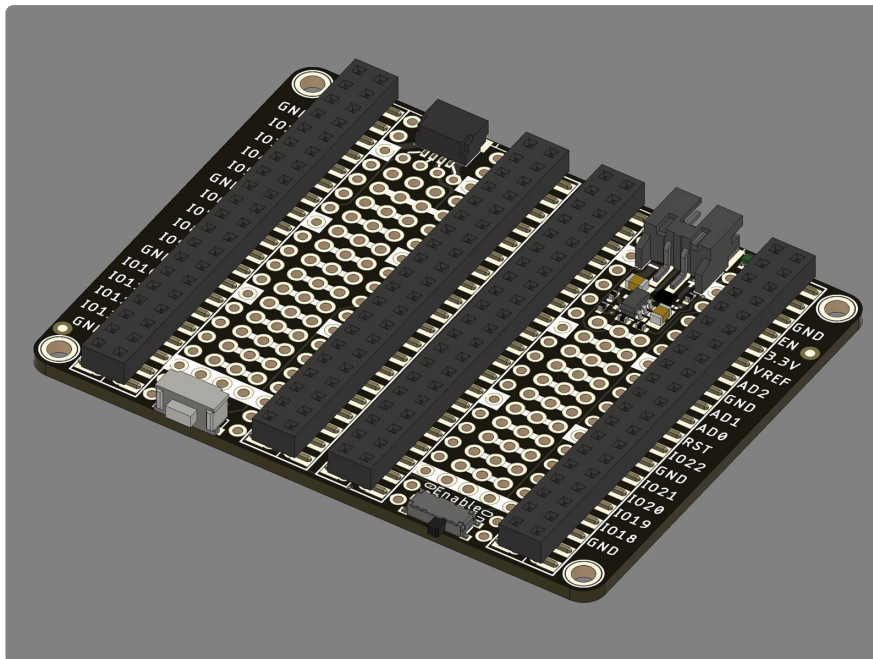
10% gyroid infill

60mm/s print speed

60c heated bed

3D Models on GitHub

<https://adafru.it/19KD>



## Adhere parts

The plates are separated into two parts to prevent having to use any support material. Use glue, such as CA (a.k.a. SuperGlue), to adhere both sides together.

