

feather

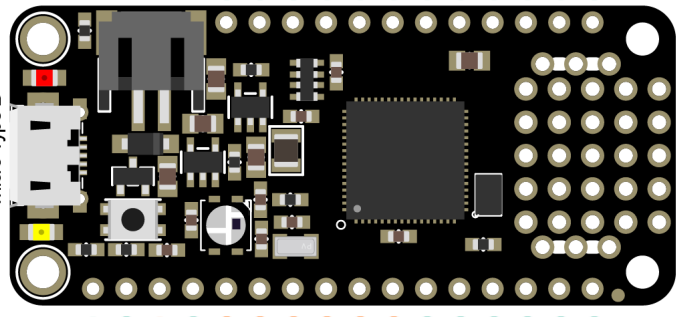
M4 Express

PINOUT

■ Power
■ GND
■ Port Pin
■ Interrupt
■ Serial [SERCOM] / I2C [I2C]
■ Timer [TIMER] / I2C [I2C]
■ Pin Function
■ Analog Output
■ Control Pin
■ IDE
~ PWM Pin
● Power Supply

On-Board Components

QSPI FLASH Memory
 PB10 I10 S^{4.2} TC^{5.0} TCC^{0.4} TCC^{1.0} Q_SCK 34
 PB11 I11 S^{4.3} TC^{5.1} TCC^{0.5} TCC^{1.1} Q_CS 35
 PA08 NMI S^{0.0} S^{2.1} TC^{0.0} TCC^{0.0} TCC^{1.4} Q_IO0 36
 PA09 I9 S^{0.1} S^{2.0} TC^{0.1} TCC^{0.1} TCC^{1.5} Q_IO1 37
 PA10 I10 S^{0.2} S^{2.2} TC^{1.0} TCC^{0.2} TCC^{1.6} Q_IO2 38
 PA11 I11 S^{0.3} S^{2.3} TC^{1.1} TCC^{0.3} TCC^{1.7} Q_IO3 39
Battery Voltage Divider
 PB01 I1 S^{5.3} TC^{7.1} 20 A6
Built-In NeoPixel
 PB03 I3 S^{5.1} TC^{8.1} 8



RESET
 3V3
 VREF A I3 PA03
 GND
 3.3V Max

DAC0
 DAC1
 14 A0
 15 A1
 16 A2
 17 A3
 18 A4
 19 A5
 25 SCK TC^{2.1} TCC^{1.1} TCC^{0.5} S^{1.1} S^{3.0} I1 PA17
 24 MOSI S^{1.3} S^{5.3} I7 PB23
 23 MISO S^{1.2} S^{5.2} I6 PB22
 0 RX I2SMCK TCC^{3.1} TCC^{0.5} S^{5.1} I1 PB17
 1 TX I2SCK TCC^{3.0} TCC^{0.4} S^{5.0} I0 PB16
 4 TC^{3.0} TCC^{3.0} TCC^{1.2} S^{2.2} S^{4.2} I14 PA14

12 PA02
 S^{0.1} PA05
 S^{4.0} PB08
 S^{4.1} PB09
 S^{0.0} PA04
 S^{0.2} PA06
 S^{1.3} PA17

TC^{0.1}
 TC^{4.0}
 TC^{4.1}
 TC^{0.0}
 TC^{1.0}

⚠ **ABSOLU** Max per pin
 10mA, 7mA Recommended
⚠ **ABSOLU** Max 130mA
 for the entire package

Optional LiPo Battery
 VBAT
 EN
 VUSB
 1 Connect to GND to disable 3.3V regulator

PA23 I7 S^{3.1} S^{5.0} TC^{4.1} TCC^{1.7} TCC^{0.3} I2SFS1 13
 PA22 I6 S^{3.0} S^{5.1} TC^{4.0} TCC^{1.6} TCC^{0.2} I2SDI 12
 PA21 I5 S^{5.3} S^{3.3} TCC^{1.5} TCC^{0.1} I2SDO 11
 PA20 I4 S^{5.2} S^{3.2} TCC^{1.4} TCC^{0.0} I2SFS0 10
 PA19 I3 S^{1.3} S^{3.3} TC^{3.1} TCC^{1.3} TCC^{0.7} 9
 PA18 I2 S^{1.2} S^{3.2} TC^{3.0} TCC^{1.2} TCC^{0.6} 6
 PA16 I0 S^{1.0} S^{3.1} TC^{2.0} TCC^{1.0} TCC^{0.4} 5
 PA13 I13 S^{2.1} S^{4.0} TC^{2.1} TCC^{0.7} TCC^{1.3} SCL 22
 PA12 I12 S^{2.0} S^{4.1} TC^{2.0} TCC^{0.6} TCC^{1.2} SDA 21

VUSB Connected to 5V USB Port
ABSOLU Max 500mA
VBAT Connected to Positive Terminal
 of LiPo Battery
3V3 3.3V output from regulator
ABSOLU Max 400mA



<https://www.adafruit.com/product/3857>