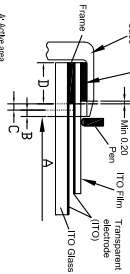
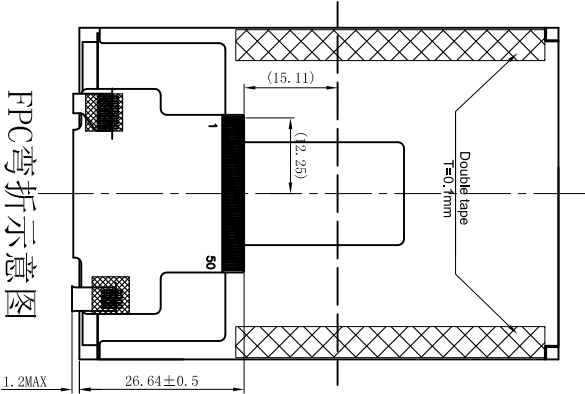
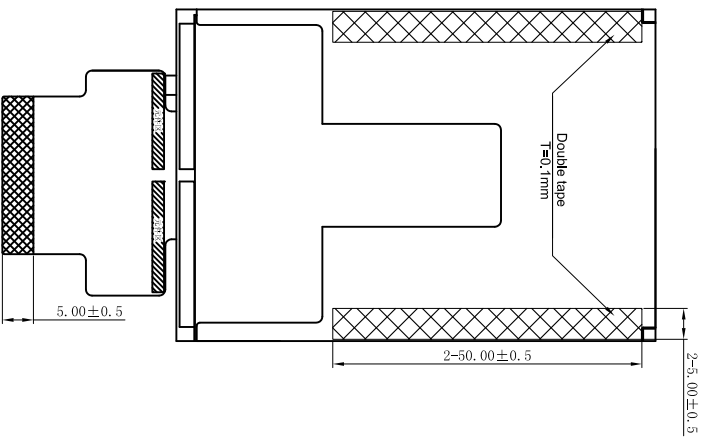
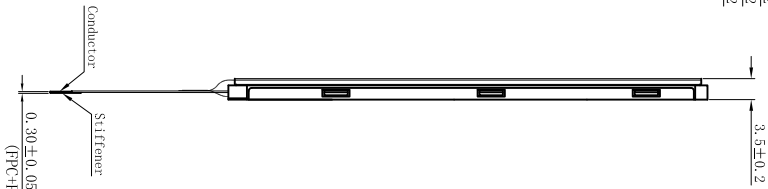
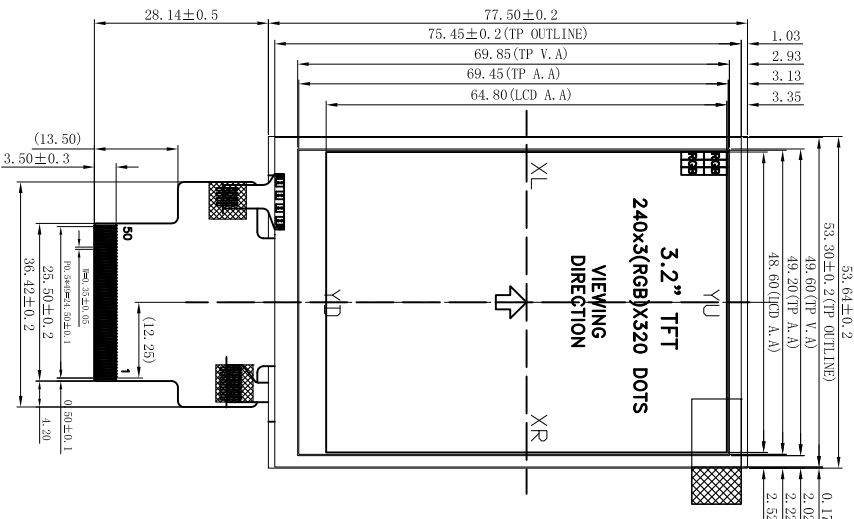


Structure and Area definition



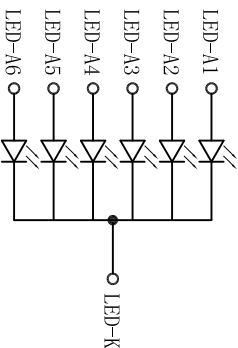
A. Active area
The area which guarantees a touch panel operation without failure characteristics when pressed. It depends on the characteristics of the conductive film, the characteristics of the conductive paste, the operation concentration area. The area which does not guarantee a touch panel operation and its location when the active area is damaged is not included in the active area. Its durability increases about conductive compound with the operation concentration area. The area which is outside from the boundary of the active area corresponds to this area.

C. Operation protection area
Operation protection area is provided because an excessive heat is applied to transparent electrode and a serious damage is given to touch panel function by pressing. On the back side, The area which does not define over if pressed.



FPC弯折示意图
展开出货

PIN	SYMBOL
1	LED-K
2	LED-A1
3	LED-A2
4	LED-A3
5	LED-A4
6	LED-A5
7	LED-A6
8	LED-K
9	LED-K
10	RESET
11	VSYNC
12	HSYNC
13	TDCLK
14	DE
15	DB17
16	DB16
17	DB15
18	DB14
19	DB13
20	DB12
21	DB11
22	DB10
23	DB9
24	DB8
25	DB7
26	DB6
27	DB5
28	DB4
29	DB3
30	DB2
31	DB1
32	DB0
33	SDD
34	SDD
35	/RD
36	/WR-RS
37	RES-SCL
38	/CS
39	TE
40	INDVCC
41	INDVCC
42	VCI
43	VCI
44	GND
45	KR-CTPSSCL
46	YD-CTPSSDA
47	XL-CTPPIRD
48	VUL-CTPRES
49	LED-A5
50	LED-A6
51	GND



BL CIRCUIT DIAGRAM
VF=3.0-3.4V, IF=90mA

- NOTES:
1. DISPLAY TYPE: 3.2" TFT
 2. VIEWING DIRECTION: 6:00
 3. LCD DRIVE IC: IL19341
 4. POLARIZER MODE: TRANSMISSIVE/POSITIVE
 5. OPERATING TEMP: -20° C~+70° C
 6. STORAGE TEMP: -30° C~+80° C
 7. UNMARKER TOLERANCE: ±0.20
 8. REQUIREMENTS ON ENVIRONMENTAL PROTECTION: ROHS

REV.	CONTENT	DATE	TOLERANCE	SCALE
A	NEW	2014.11.03	APPROVE	DATE
B	Modify LED Circuit	2014.11.06	CHECK	DATE
C	Add double tape	2015.04.02	DRAWING	LGZ

MODEL	QC032TM50TP
PAGE	1 of 1
UMIT	mm
SIZE	A4