

adafruit CIRCUIT PLAYGROUND express

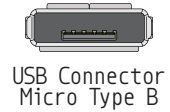
PINOUT

I/O	Pin	MCU Pin	MCU Function	MCU Group	MCU ID	
NeoPixel	38	PB23	EINT7	S5:3	8	
Speaker	3	PA02	EINT2	DAC	A0	
Temp. Sensor	14	PA09	EINT9	S2:1	A9	
Light Sensor	16	PA11	EINT11	S2:3	A8	
Sound Sensor	13	PA08	I2C	S2:0	A16	
	15	PA10	EINT10	S2:2	A18	
Button A	41	PA28	EINT8	S5:3	4	
Button B	23	PA14	EINT14	S2:4	5	
Slide Switch	24	PA15	EINT15	S2:3	7	
IR TX	32	PA23	EINT7	S3:1	I2C	SOF
IR RX	21	PA12	EINT12	S2:0	I2C	
Accelerometer	1	PA00	EINT0	S1:0	SDA	
	2	PA01	EINT1	S1:1	SCL	

- Power
- GND
- Physical PIN
- Port PIN
- Analog PIN
- Serial PIN
- PIN Function
- Interrupt PIN
- Control PIN
- IDE

⊘ The total current of each port power group **should not exceed** 65mA

⚠ **Absolute** MAX per pin 10mA, 7mA recommended

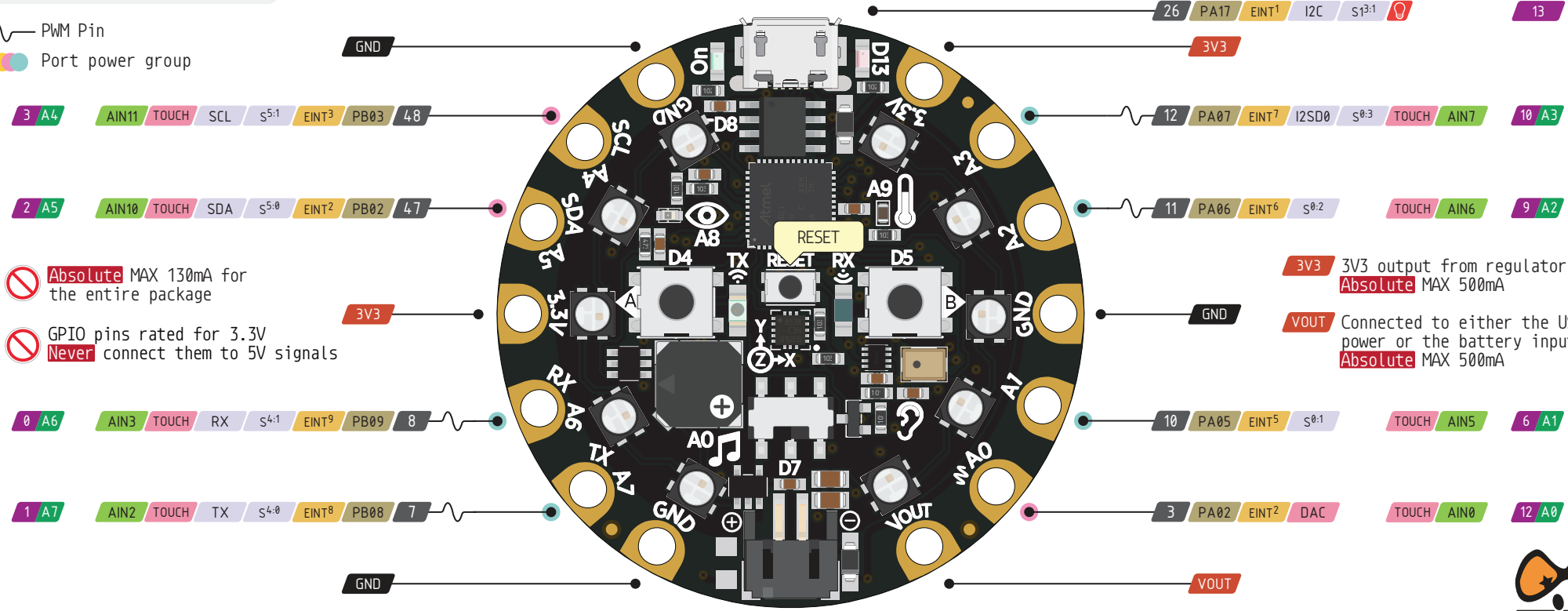


Flash Access

45	PA30	EINT10	S1:2	11	SWCLK
46	PA31	EINT11	S1:3		SWDIO
40	RESET				

~ PWM Pin

Port power group



⊘ **Absolute** MAX 130mA for the entire package

⊘ GPIO pins rated for 3.3V **Never** connect them to 5V signals

3V3 3V3 output from regulator **Absolute** MAX 500mA

VOUT Connected to either the USB power or the battery input **Absolute** MAX 500mA



Optional LiPoly Battery

<https://www.adafruit.com/product/3333>

