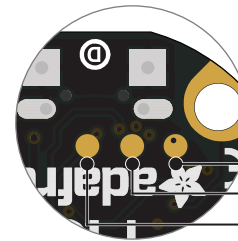


GEMMA MO

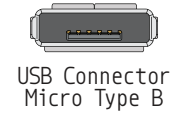
PINOUT

DotStar LED					
1	PA00	EINT0	S1:0	3	DI
2	PA01	EINT1	S1:1	4	CI

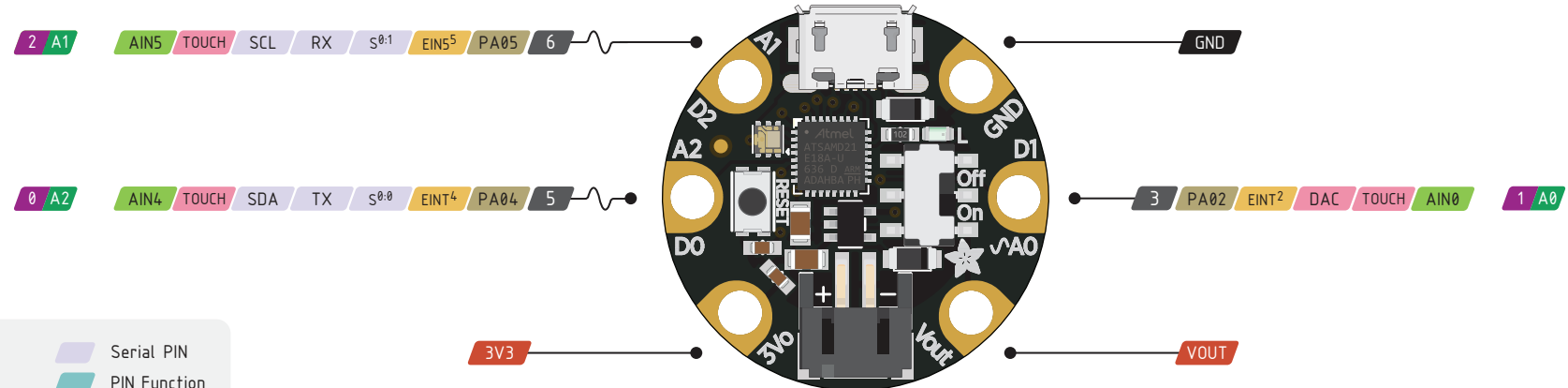
Flash Access					
32	PA31	EINT11	S1:3	12	SWDIO
31	PA30	EINT10	S1:2	11	SWCLK
26	RESET				



Back Side



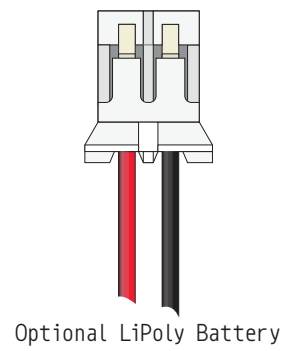
USB Connector
Micro Type B



Power	Serial PIN
GND	PIN Function
Physical PIN	Interrupt PIN
Port PIN	Control PIN
Analog PIN	IDE

~ PWM Pin

- Absolute** MAX per pin 10mA, 7mA recommended
- Absolute** MAX 130mA for the entire package
- GPIO pins rated for 3.3V **Never** connect them to 5V signals



Optional LiPoly Battery

- 3V3** 3V3 output from regulator **Absolute** MAX 500mA
- VOUT** Connected to either the USB power or the battery input **Absolute** MAX 500mA



<https://www.adafruit.com/product/3501>

