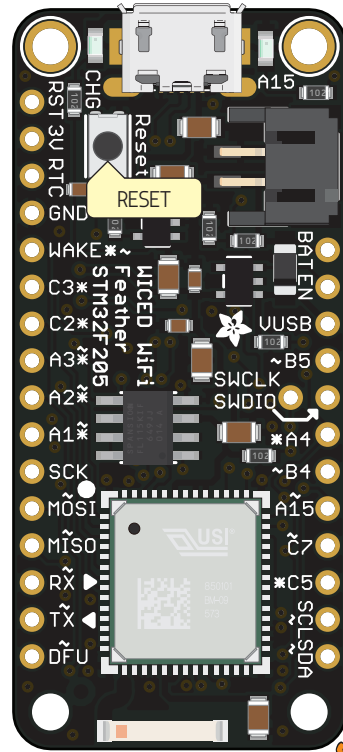
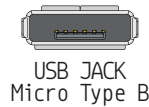
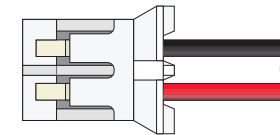


feather

Wiced WiFi **PINOUT**



				RESET	26
				3V3	
				3V3	
				GND	
PA0 A0	ADC0 TXD4 CTS2	PA0	27		
PC3 A13	ADC13	PC3	1		
PC2 A12	ADC12	PC2	2		
PA3 A3	ADC3 RXD2	PA3	6		
PA2 A2	ADC2 TXD2	PA2	7		
PA1 A1	ADC1 RXD4 RTS2	PA1	8		
PA5	SCK SCK1 DAC2	PA5	24		
PA7	MOSI MOSI1	PA7	23		
PA6	MISO MISO1	PA6	25		
PA10	RX RXD1	PA10	38		
PA9	TX TXD1	PA9	39		
PB3	DFU SCK3	PB3	41		



Optional Lipoly Battery

				VBAT	
				En	
				VBUS	
				3	PB5 MOSI3 CANRX2
				44	PA13
				22	PA4 DAC1
				42	PB4 MISO3
				43	PA15
				53	PC7
				54	PC5
				5	PB6 SCL1 CANTX2 SCL
				4	PB7 SDA1 SDA
					PB5
					PA13
					PA4 A4
					PB4
					PA15 A7
					PC7
					PC5 A15
					PB6
					PB7

- Power
- GND
- Physical PIN
- Port PIN
- Analog PIN
- Serial PIN
- PIN Function
- Interrupt PIN
- Control PIN
- IDE

PWM Pin

Absolute MAX per pin 10mA, 7mA recommended

Absolute MAX 130mA for the entire package

VBUS Connected to 5V USB Port **Absolute** MAX 500mA

VBAT It's the positive voltage from to JST Batt jack

3V3 3V3 output from regulator **Absolute** MAX 400mA