










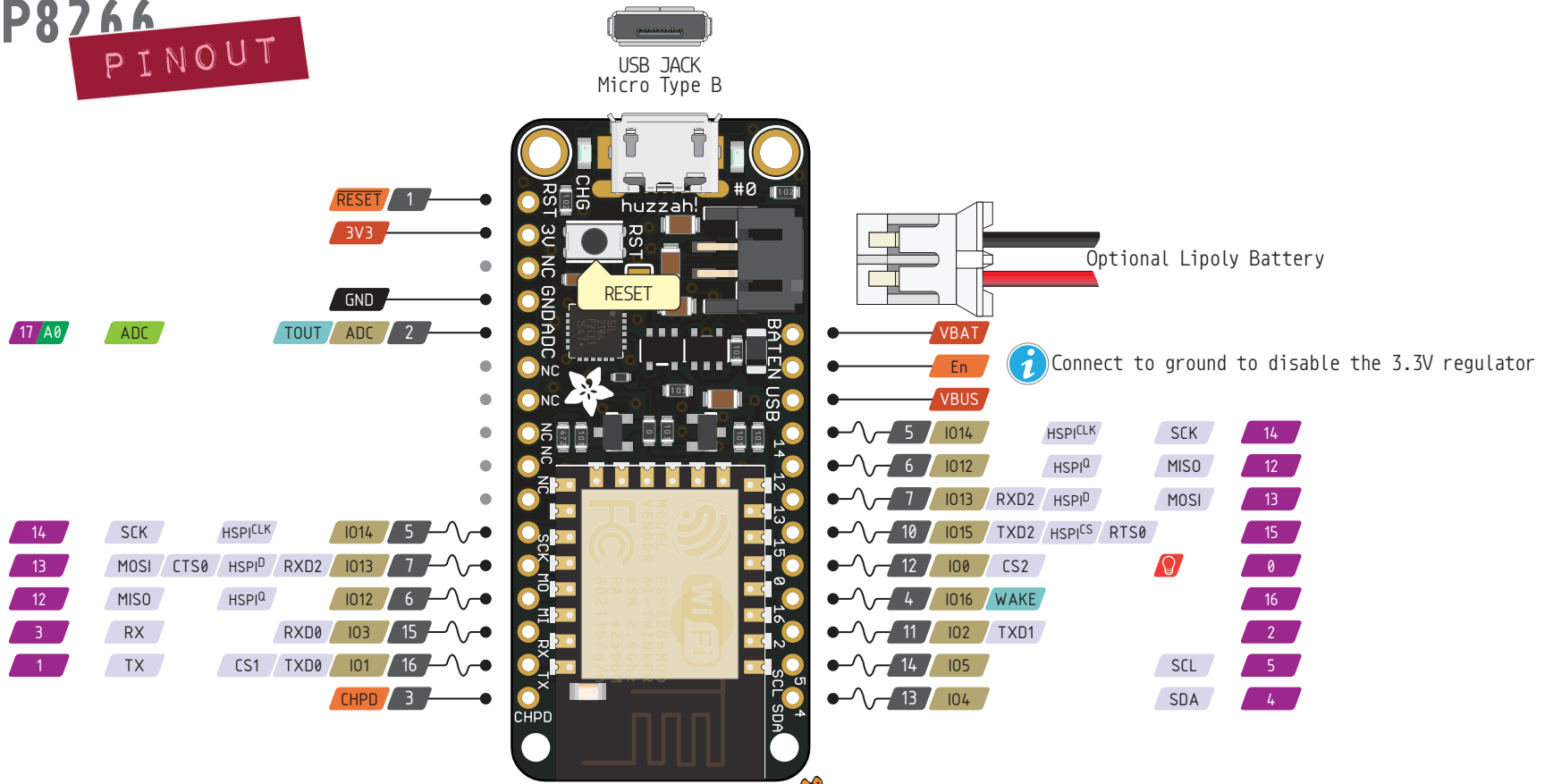
feather

HUZZAH ESP8266

PINOUT

-  Power
-  GND
-  Physical PIN
-  Port PIN
-  Analog PIN
-  Serial PIN
-  PIN Function
-  Interrupt PIN
-  Control PIN
-  IDE

 PWM Pin



 **Absolute** MAX per pin
12mA, 6mA recommended

 **Absolute** MAX 85mA for
the entire package

VBUS Connected to 5V USB Port
Absolute MAX 500mA

VBAT It's the positive voltage
from to JST Batt jack

3V3 3V3 output from regulator
Absolute MAX 400mA