


feather

nRF52

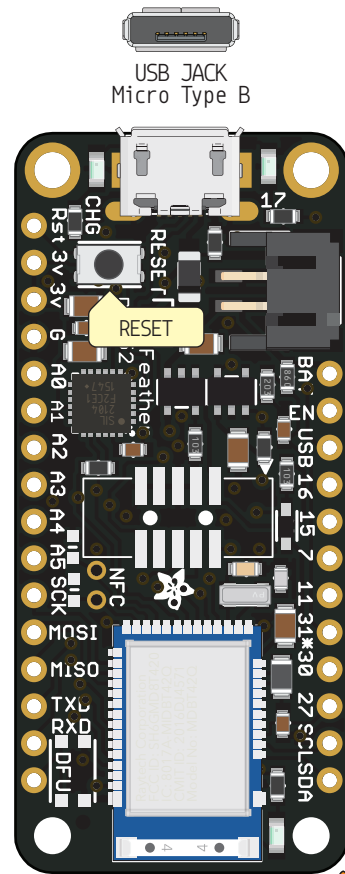
PINOUT



- Power
- GND
- Physical PIN
- Port PIN
- Analog PIN
- Serial PIN
- PIN Function
- Interrupt PIN
- Control PIN
- IDE

 PWM Pin



For 0.28 and 0.29 pin recommended
Low drive, low frequency I/O only 

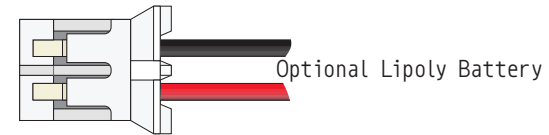
■ 2 A0	■ AIN0	■ 0.02 15	
■ 3 A1	■ AIN1	■ 0.03 16	
■ 4 A2	■ AIN2	■ 0.04 17	
■ 5 A3	■ AIN3	■ 0.05 18	
■ 28 A4	■ AIN4	■ 0.28 5	
■ 29 A5	■ AIN5	■ 0.29 6	
■ 12	■ SCK	■ 0.12 26	
■ 13	■ MOSI	■ 0.13 27	
■ 14	■ MISO TD[3]	■ 0.14 28	
■ 8	■ RX	■ 0.08 21	
■ 6	■ TX	■ 0.06 19	
■ 20	■ DFU	■ 0.20 34	




-  Any GPIO pin can be configured as a PWM output
-  Any GPIO pin support interrupts

Extra Functions

■ 23 0.10		■ 10 NFC2
■ 22 0.09		■ 9 NFC1
■ 33 0.19		■ 19 LED2
■ 31 0.17		■ 17 LED1



■ VBAT	 Connect to ground to disable the 3.3V regulator	■ 16
■ En		■ 15
■ VBUS		■ 7
■ 30 0.16 TD[1]		■ 11
■ 29 0.15 TD[2]		■ 31 A7
■ 20 0.07		■ 30 A6
■ 25 0.11		■ 27
■ 31 0.31	■ AIN7	■ 26
■ 7 0.30	■ AIN6	■ 25
■ 4 0.27		
■ 3 0.26	■ SCL	
■ 2 0.25	■ SDA	

 Avoid using this pin directly
Used to measure the LiPo battery level

 **Absolute** MAX per pin
10mA, 5mA recommended

 **Absolute** MAX 30mA for
the entire package

■ **VBUS** Connected to 5V USB Port
Absolute MAX 500mA

■ **VBAT** It's the positive voltage
from to JST Batt jack

■ **3V3** 3V3 output from regulator
Absolute MAX 400mA