

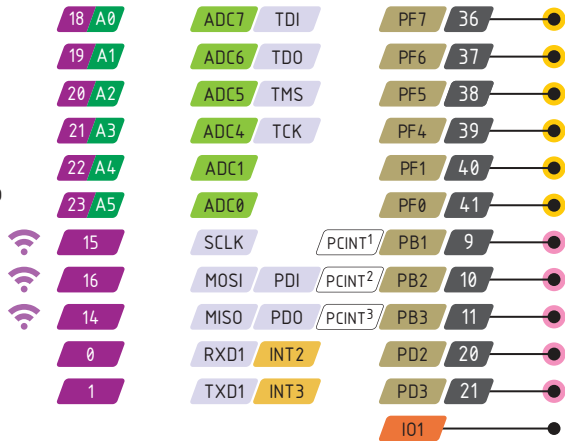
feather

32u4 RFMx PINOUT

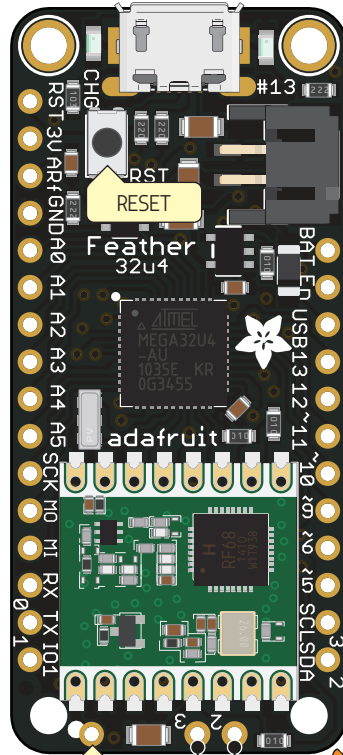
- Power
- GND
- Physical PIN
- Port PIN
- Analog PIN
- Serial PIN
- PIN Function
- Interrupt PIN
- Control PIN
- IDE

PWM Pin
 Port power group

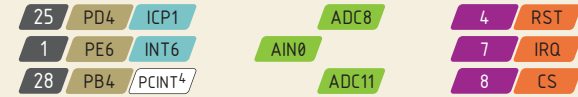
Can't go higher than 3.3V



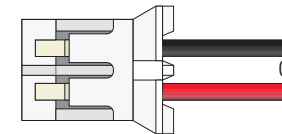
USB JACK
Micro Type B



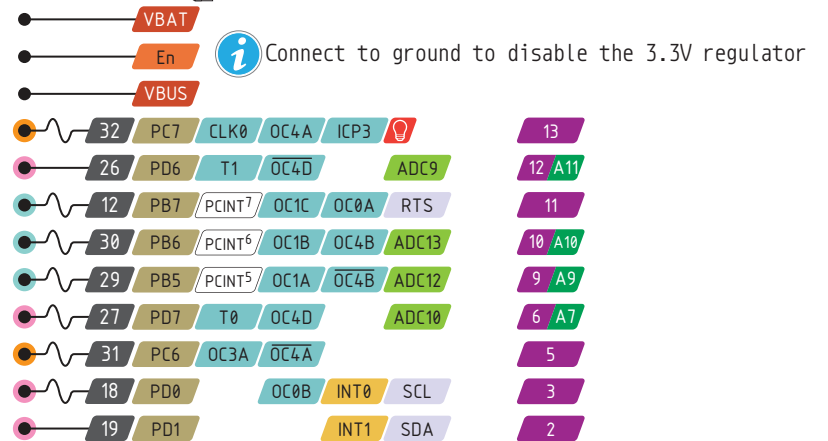
RFM Module control



Used by the RFM radio module too!



Optional Lipoly Battery



Connect to ground to disable the 3.3V regulator

The total current of each port power group should not exceed 100mA

Absolute MAX per pin 20mA, 10mA recommended

Absolute MAX 200mA for the entire package

EXT Ant

I03 I02

I01, I02 and I03 are RFM Module GPIO

VBUS Connected to 5V USB Port
Absolute MAX 500mA

VBAT It's the positive voltage from to JST Batt jack

3V3 3V3 output from regulator
Absolute MAX 400mA