

feather

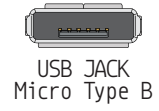
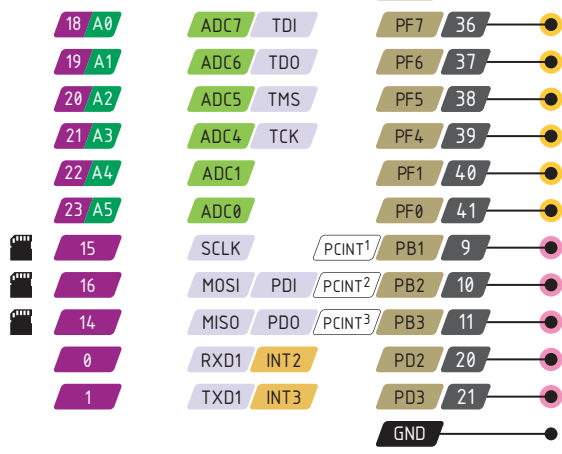
32u4 AdaLogger

PINOUT

- Power
- GND
- Physical PIN
- Port PIN
- Analog PIN
- Serial PIN
- PIN Function
- Interrupt PIN
- Control PIN
- IDE

- PWM Pin
- Port power group

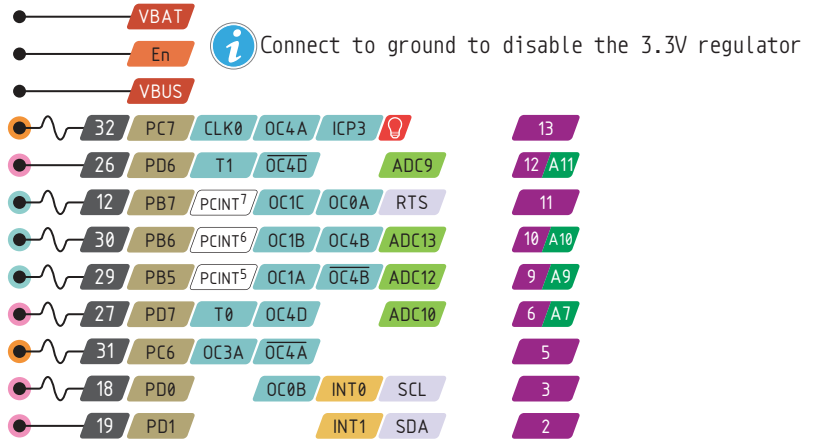
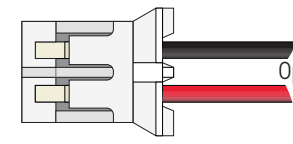
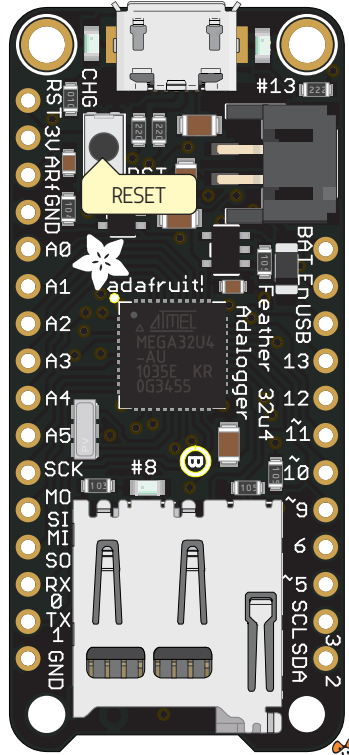
Can't go higher than 3.3V



SD Control

■ 25 PD4 / ICP1	■ ADC8	■ 4 CS
■ 1 PE6 / INT6	■ AIN0	■ 7 CD

Used by the SD Card module too!



- The total current of each port power group **should not exceed** 100mA
- Absolute** MAX per pin 20mA, 10mA recommended
- Absolute** MAX 200mA for the entire package

- VBUS Connected to 5V USB Port **Absolute** MAX 500mA
- VBAT It's the positive voltage from to JST Batt jack
- 3V3 3V3 output from regulator **Absolute** MAX 400mA



<https://www.adafruit.com/product/2795>

