

feather

32u4 LoRa

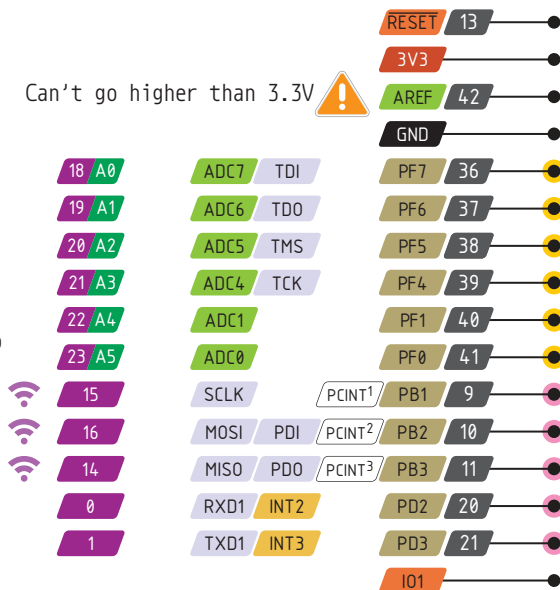
PINOUT

- Power
- GND
- Physical PIN
- Port PIN
- Analog PIN
- Serial PIN
- PIN Function
- Interrupt PIN
- Control PIN

PWM Pin

Port power group

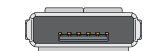
Can't go higher than 3.3V



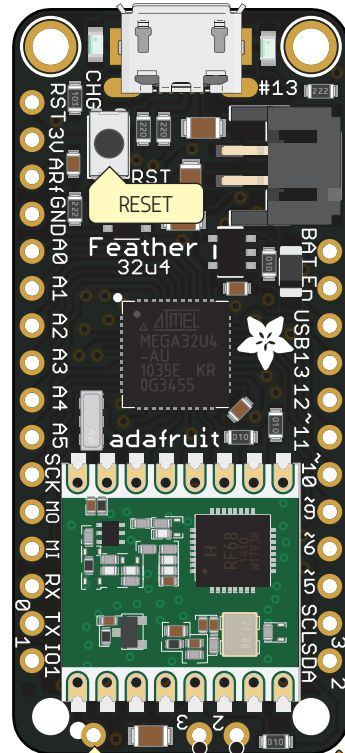
The total current of each port power group should not exceed 100mA

Absolute MAX per pin 20mA, 10mA recommended

Absolute MAX 200mA for the entire package



USB JACK
Micro Type B



EXT Ant

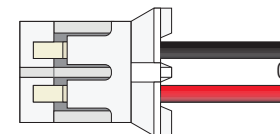
IO3 IO2

IO1, IO2, IO3 are LoRa Module GPIO Pins

LoRa Module control

25 PD4 ICP1	ADC8	4 RST
1 PE6 INT6	AIN0	7 IRQ
28 PB4 PCINT4	ADC11	8 CS

Used by the LoRa radio module too!

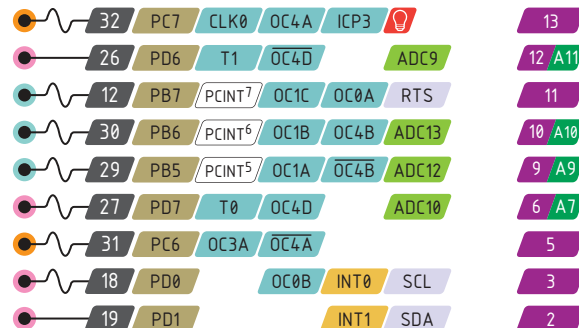


Optional Lipoly Battery

VBAT

En Connect to ground to disable the 3.3V regulator

VBUS



VBUS Connected to 5V USB Port
Absolute MAX 500mA

VBAT It's the positive voltage from to JST Batt jack

3V3 3V3 output from regulator
Absolute MAX 400mA