

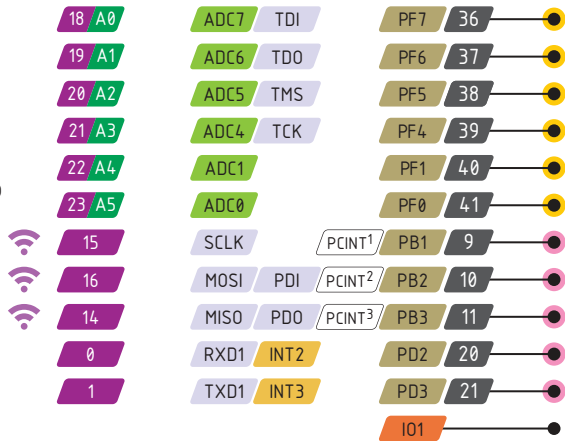
feather

32u4 RFMx PINOUT

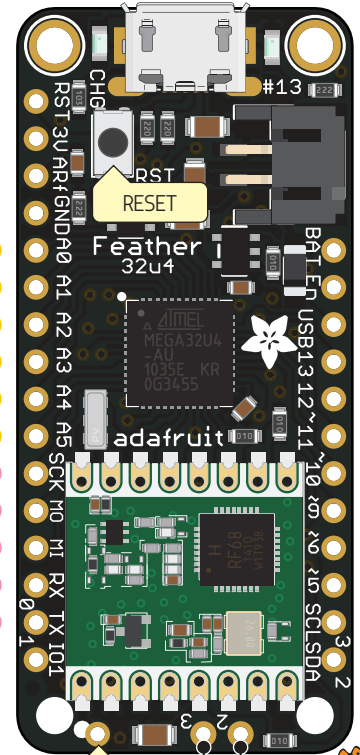
- Power
- GND
- Physical PIN
- Port PIN
- Analog PIN
- Serial PIN
- PIN Function
- Interrupt PIN
- Control PIN

- PWM Pin
- Port power group

Can't go higher than 3.3V



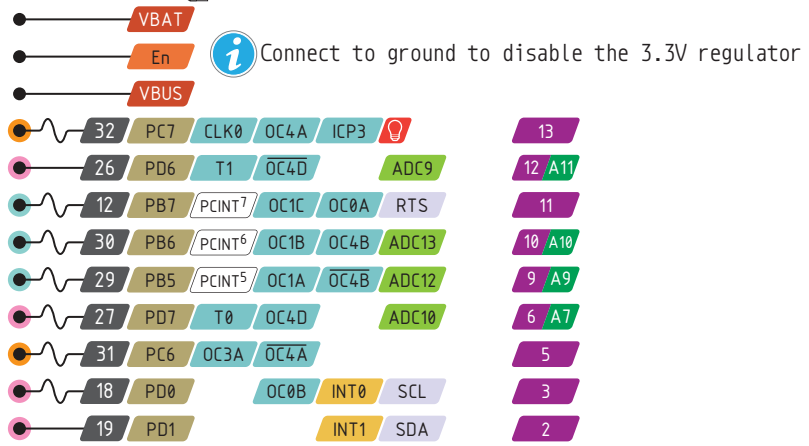
USB JACK
Micro Type B



RFM Module control

| | | |
|--|--|---|
| ■ 25 PD4 ICP1 | ■ ADC8 | ■ 4 RST |
| ■ 1 PE6 INT6 | ■ AIN0 | ■ 7 IRQ |
| ■ 28 PB4 PCINT4 | ■ ADC11 | ■ 8 CS |

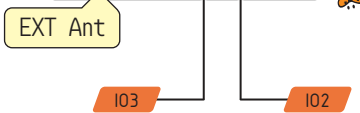
Used by the RFM radio module too!



- The total current of each port power group **should not exceed** 100mA
- Absolute** MAX per pin 20mA, 10mA recommended
- Absolute** MAX 200mA for the entire package

- VBUS Connected to 5V USB Port **Absolute** MAX 500mA
- VBAT It's the positive voltage from to JST Batt jack
- 3V3 3V3 output from regulator **Absolute** MAX 400mA

I01, I02 and I03 are RFM Module GPIO



<https://www.adafruit.com/product/3078>

