

feather

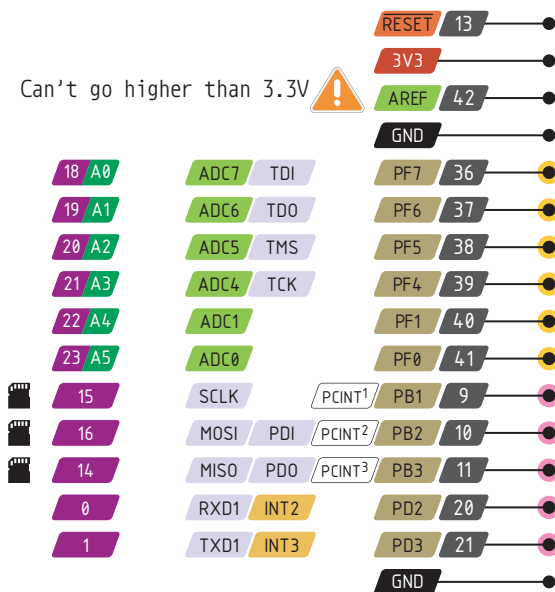
32u4 AdaLogger

PINOUT

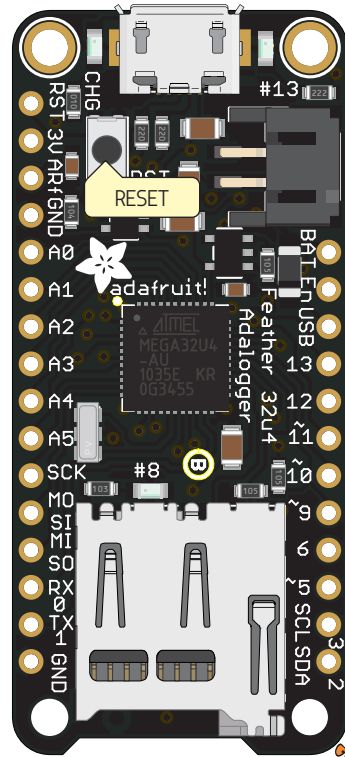
- Power
- GND
- Physical PIN
- Port PIN
- Analog PIN
- Serial PIN
- PIN Function
- Interrupt PIN
- Control PIN

PWM Pin
Port power group

Can't go higher than 3.3V



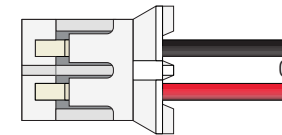
USB JACK
Micro Type B



SD Control

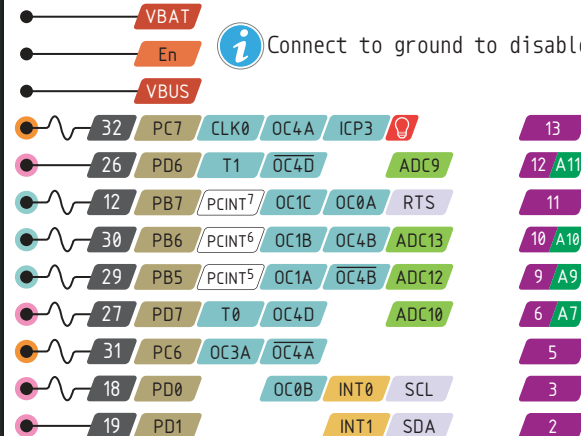
25	PD4	ICP1	ADC8	4	CS
1	PE6	INT6	AIN0	7	CD

Used by the SD Card module too!



Optional Lipoly Battery

Connect to ground to disable the 3.3V regulator



The total current of each port power group should not exceed 100mA

Absolute MAX per pin 20mA, 10mA recommended

Absolute MAX 200mA for the entire package

VBUS Connected to 5V USB Port
Absolute MAX 500mA

VBAT It's the positive voltage from to JST Batt jack

3V3 3V3 output from regulator
Absolute MAX 400mA