

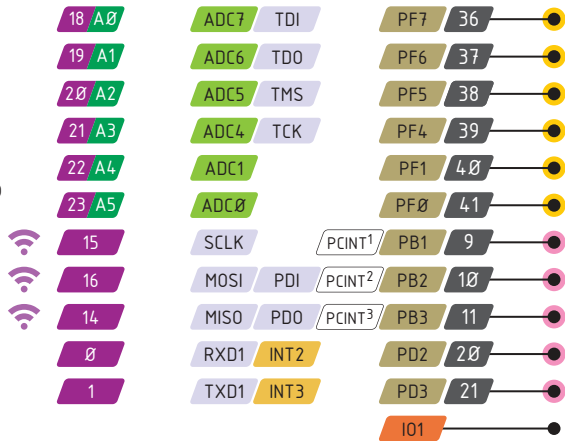
feather

32u4 LoRa PINOUT

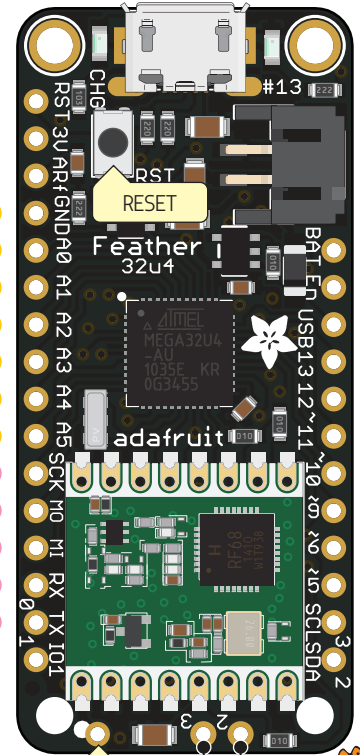
- █ Power
- █ GND
- █ Physical PIN
- █ Port PIN
- █ Analog PIN
- █ Serial PIN
- █ PIN Function
- █ Interrupt PIN
- █ Control PIN

- PWM Pin
- Port power group

Can't go higher than 3.3V



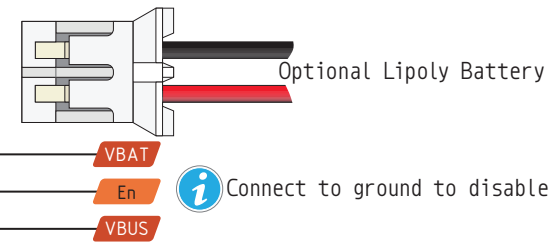
USB JACK
Micro Type B



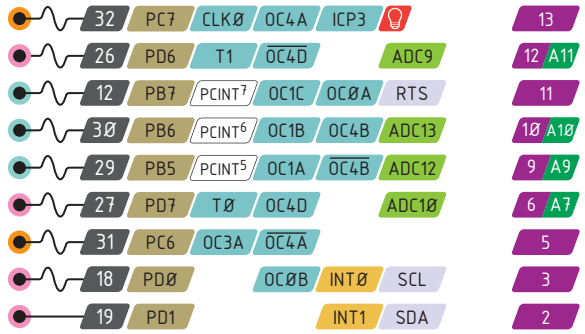
LoRa Module control

| | | |
|---------------|-------|-------|
| 25 PD4 ICP1 | ADC8 | 4 RST |
| 1 PE6 INT6 | AIN0 | 7 IRQ |
| 28 PB4 PCINT4 | ADC11 | 8 CS |

Used by the LoRa radio module too!



Connect to ground to disable the 3.3V regulator



- The total current of each port power group should not exceed 100mA
- Absolute** MAX per pin 20mA, 10mA recommended
- Absolute** MAX per pin 200mA for the entire package

- VBAT** Connected to 5V USB Port **Absolute** MAX 500mA
- VBUS** It's the positive voltage from to JST Batt jack
- 3V3** 3V3 output from regulator **Absolute** MAX 400mA

IO1, IO2, IO3 are LoRa Module GPIO Pins



<https://www.adafruit.com/product/3078>