

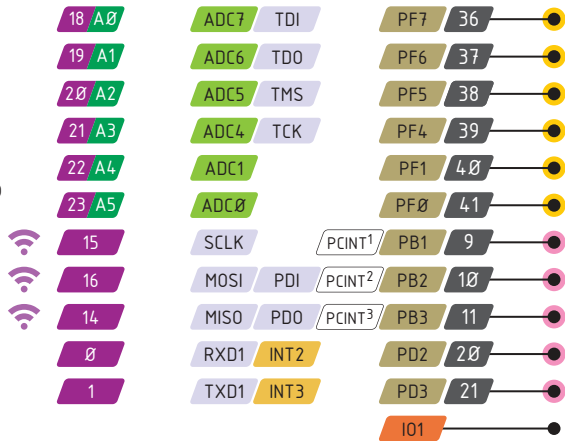
# feather

## 32u4 RFMx PINOUT

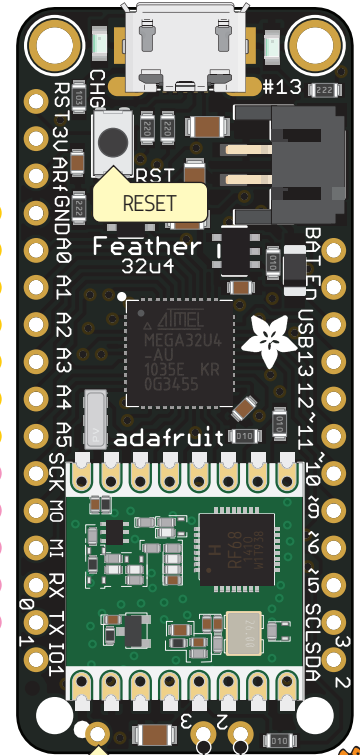
- Power
- GND
- Physical PIN
- Port PIN
- Analog PIN
- Serial PIN
- PIN Function
- Interrupt PIN
- Control PIN

PWM Pin  
 Port power group

Can't go higher than 3.3V



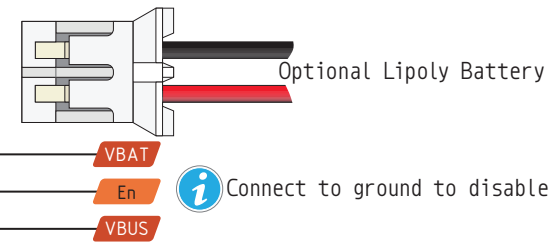
USB JACK  
Micro Type B



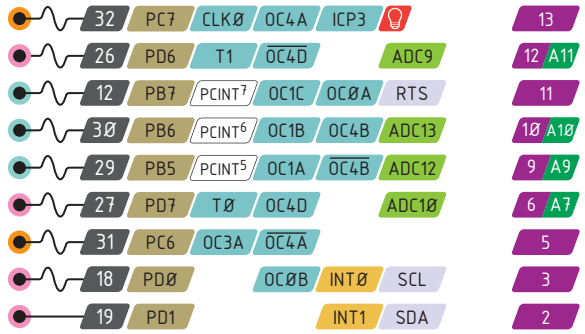
### RFM Module control

25 PD4 ICP1	ADC8	4 RST
1 PE6 INT6	AIN0	7 IRQ
28 PB4 PCINT4	ADC11	8 CS

Used by the RFM radio module too!



Connect to ground to disable the 3.3V regulator



- The total current of each port power group should not exceed 100mA
- Absolute MAX per pin 20mA, 10mA recommended
- Absolute MAX per pin 200mA for the entire package

- VBAT** Connected to 5V USB Port Absolute MAX 500mA
- VBUS** It's the positive voltage from to JST Batt jack
- 3V3** 3V3 output from regulator Absolute MAX 400mA

IO1, IO2 and IO3 are RFM Module GPIO



<https://www.adafruit.com/product/3078>