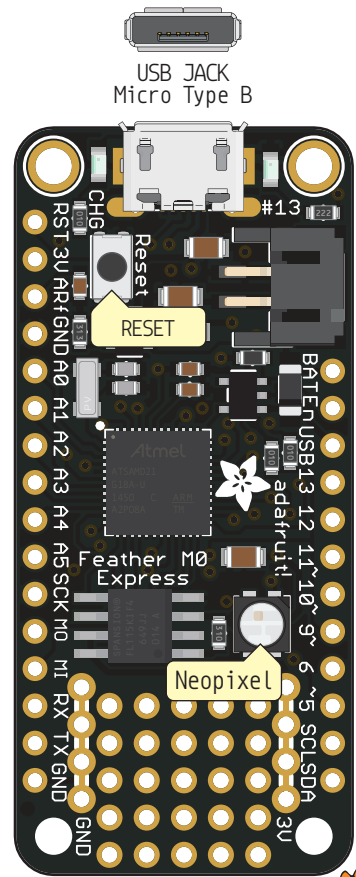


feather

M0 Express

PINOUT



Flash Access

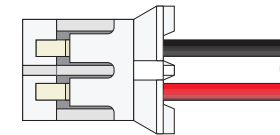
14	PA09	EINT9	I2C	S0 ^{2:1}	I2SMC	3	SCK
23	PA14	EINT14		S3 ^{4:2}		2	MISO
13	PA08	EINT9	I2C	S0 ^{2:0}	I2SD1	4	MOSI
22	PA13	EINT13	I2C	S2 ^{4:1}		38	CS

Neopixel

11	PA06	EINT6		S0 ²		8	NEOPIX
----	------	-------	--	-----------------	--	---	--------

Can't go higher than 3.3V

AIN1	VREFA	EINT3	PA02	4	RESET	40
AIN0	DAC	EINT2	PA02	3	3V3	
A1	AIN2	S4 ⁰	EINT8	PB08	7	GND
A2	AIN3	S4 ¹	EINT9	PB09	8	
A3	AIN4	S0 ^{0:0}	VREFB	EINT4	PA04	9
A4	AIN5	S0 ¹	EINT5	PA05	10	
A5	AIN10	S5 ⁰	EINT2	PB02	47	
SCK	S4 ³	I2SCL	EINT11	PB11	20	
MOSI	S4 ²	I2SMC	EINT10	PB10	19	
MISO	S2 ^{4:0}	I2C	PA12	21		
RX	S0 ^{2:3}	I2SF0	EINT11	PA11	16	
TX	S0 ^{2:2}	I2SCK	EINT10	PA10	15	
						GND



Optional Lipoly Battery

VBAT	En	VBUS	26	PA17	EINT1	I2C	S1 ^{3:1}	13
			28	PA19	EINT3	I2SD0	S1 ^{3:3}	12
			25	PA16	EINT0	I2C	S1 ^{3:0}	11
			27	PA18	EINT2		S1 ^{3:2}	10
			12	PA07	EINT7	I2SD0	S0 ^{3:3}	9 / A7
			29	PA20	EINT4	I2SSC	S3 ^{5:2}	6
			24	PA15	EINT15		S2 ^{4:3}	5
			32	PA23	EINT7	I2C	S3 ^{5:1}	21
			31	PA22	EINT6	I2C	S3 ^{5:0}	20

- Power
- GND
- Physical PIN
- Port PIN
- Analog PIN
- Serial PIN
- PIN Function
- Interrupt PIN
- Control PIN

PWM Pin
 Port power group

- The total current of each port power group **should not exceed** 65mA
- Absolute** MAX per pin 10mA, 7mA recommended
- Absolute** MAX per pin 130mA for the entire package



- VBAT** Connected to 5V USB Port **Absolute** MAX 500mA
- VBUS** It's the positive voltage from to JST Batt jack
- 3V3** 3V3 output from regulator **Absolute** MAX 400mA



<https://www.adafruit.com/product/3403>

