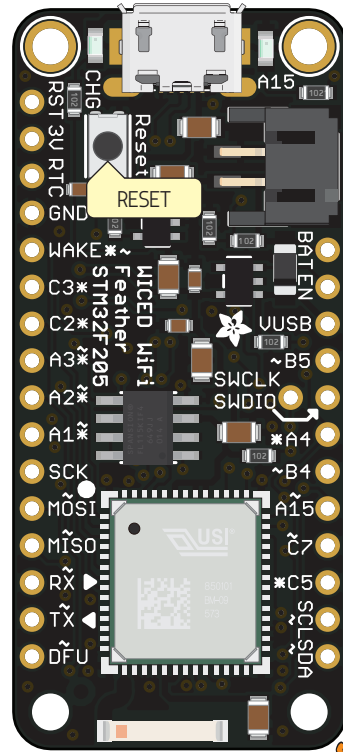
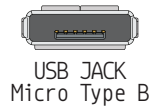


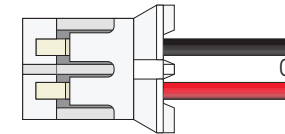
feather

Wiced WiFi **PINOUT**



RESET	26
3V3	
3V3	
GND	
PA0 A0	ADC0 TXD4 CTS2 PA0 27
PC3 A13	ADC13
PC2 A12	ADC12
PA3 A3	ADC3 RXD2
PA2 A2	ADC2 TXD2
PA1 A1	ADC1 RXD4 RTS2 PA1 8
PA5	SCK SCK1 DAC2 PA5 24
PA7	MOSI MOSI1 PA7 23
PA6	MISO MISO1 PA6 25
PA10	RX RXD1 PA10 38
PA9	TX TXD1 PA9 39
DFU	SCK3 PB3 41

RTC Power



VBAT	
En	Connect to ground to disable the 3.3V regulator
VBUS	
3	PB5 MOSI3 CANRX2 PB5
44	PA13 PA13
22	PA4 DAC1 ADC4 PA4 A4
42	PB4 MISO3 PB4
43	PA15 PA15 A7
53	PC7 PC7
54	PC5 ADC15 PC5 A15
5	PB6 SCL1 CANTX2 SCL PB6
4	PB7 SDA1 SDA PB7

- Power
- GND
- Physical PIN
- Port PIN
- Analog PIN
- Serial PIN
- PIN Function
- Control PIN

PWM Pin

Absolute MAX per pin 10mA, 7mA recommended

Absolute MAX per pin 130mA for the entire package

VBAT Connected to 5V USB Port **Absolute** MAX 500mA

VBUS It's the positive voltage from to JST Batt jack

3V3 3V3 output from regulator **Absolute** MAX 400mA